

WAAS CH 58027 W19A	APP CRS 187°	Rwy Idg TDZE 2687 Apt Elev 2694	4151 2687 2694
--	------------------------	---	---

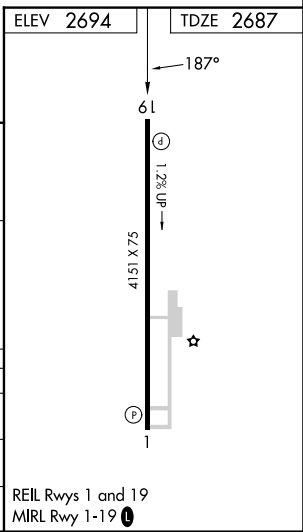
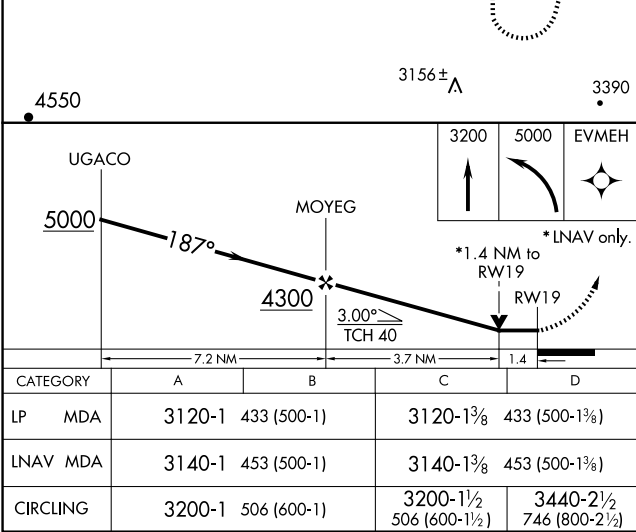
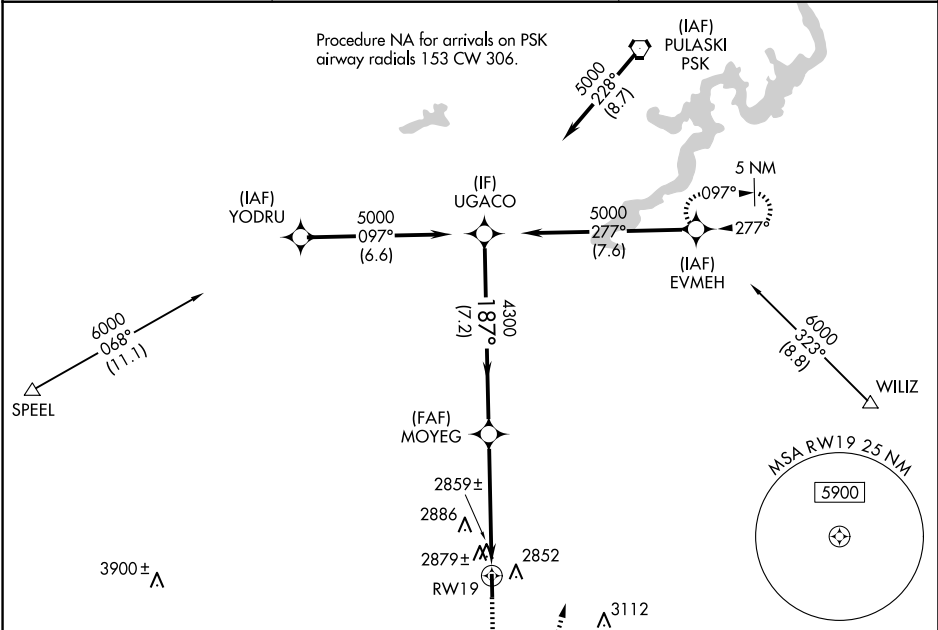
RNAV (GPS) RWY 19
TWIN COUNTY (HLX)

RNP APCH - GPS.

▼ Rwy 19 helicopter visibility reduction below ¾ SM NA. VDP NA with Dublin altimeter setting.
▲ When local altimeter setting not received, use Dublin altimeter setting: increase all MDAs 140 feet and visibility LP Cats C and D ¾ SM and Circling Cat C ¼ SM and Cat D ½ SM.

MISSED APPROACH: Climb to 3200 then climbing left turn to 5000 direct EVMEH and hold.

AWOS-3 118.375	ROANOKE APP CON 126.0 339.8	UNICOM 122.8 (CTAF) 0
--------------------------	---------------------------------------	---------------------------------



NE-3, 07 AUG 2025 to 04 SEP 2025

NE-3, 07 AUG 2025 to 04 SEP 2025