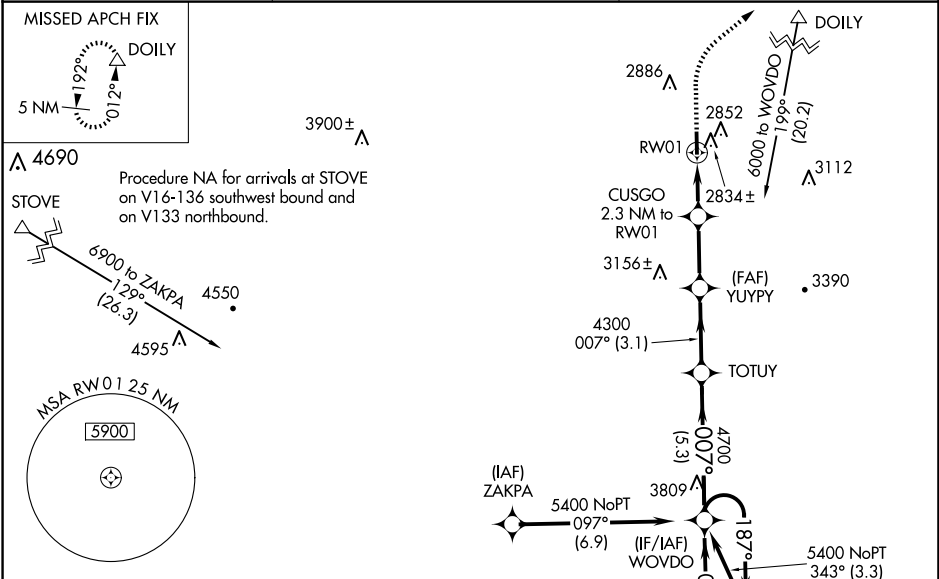


WAAS CH 69527 W01A	APP CRS 007°	Rwy Idg TDZE Apt Elev	4151 2694 2694
--	------------------------	-----------------------------	---

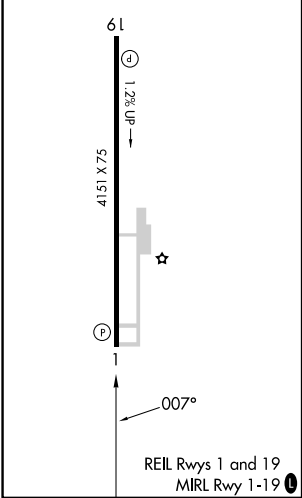
RNAV (GPS) RWY 1
TWIN COUNTY (HLX)

RNP APCH - GPS. ▼ Baro-VNAV NA when using Dublin altimeter setting. For uncompensated Baro-VNAV systems, LNAV/VNAV NA below -20°C or above 54°C. Rwy 1 helicopter visibility reduction below ¾ SM NA. VDP NA with Dublin altimeter setting. When local altimeter setting not received, use Dublin altimeter setting: increase LPV DA to 3103 feet and all visibilities ½ SM; increase LNAV/VNAV DA to 3154 feet and all visibilities ½ SM; increase all MDAs 140 feet and visibility LNAV Cats C and D ½ SM and Circling Cat C ¼ SM and Cat D ½ SM.	MISSED APPROACH: Climb to 3200 then climbing right turn to 5100 direct DOILY and hold, continue climb-in-hold to 5100.
--	--

AWOS-3 118.375	ROANOKE APP CON 126.0 339.8	UNICOM 122.8 (CTAF) 0
--------------------------	---------------------------------------	---------------------------------



ELEV 2694	TDZE 2694
-----------	-----------



3200	5100	DOILY	VGSI and RNAV glidepath not coincident (VGSI Angle 3.00/TCH 21).	5 NM Holding Pattern
*LNAV only.	CUSGO 2.3 NM to RW01	YUYPY 4300	TOTUY 4700	WOVDO 5400
*1.2 NM to RW01	*3480	4300	007°	187°
1.2 NM	1.1 NM	2.6 NM	3.1 NM	5.3 NM
CATEGORY	A	B	C	D
LPV DA	2965-1	271 (300-1)		
LNAV/VNAV DA	3016-1	322 (400-1)		
LNAV MDA	3100-1	406 (500-1)	3100-1½	406 (500-1½)
CIRCLING	3200-1	506 (600-1)	3200-1½	3440-2½
			506 (600-1½)	746 (800-2½)