

WAAS CH 82531 W09A	APP CRS 089°	Rwy Ldg TDZE Apt Elev	5100 706 706
--	------------------------	-----------------------------	---

RNAV (GPS) RWY 9

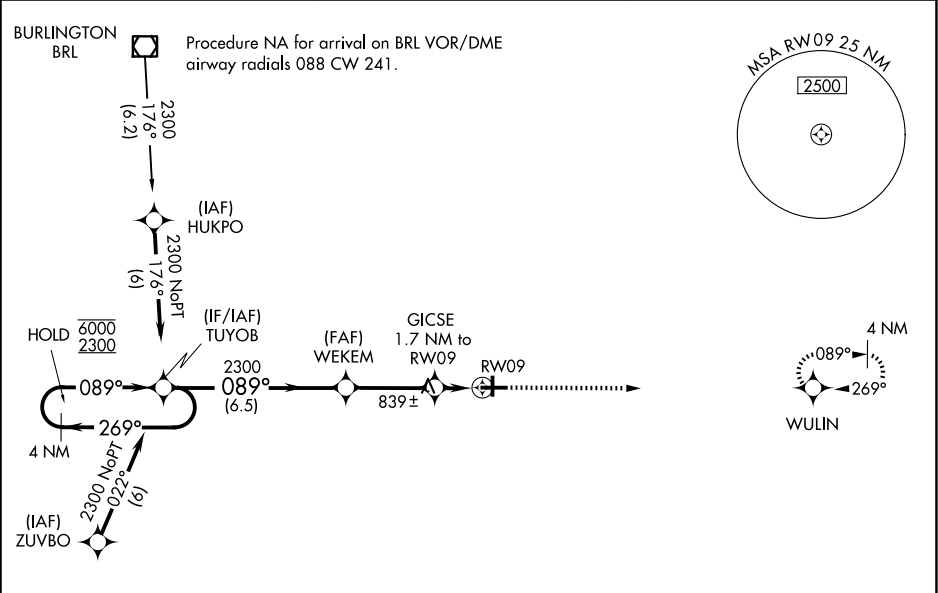
MACOMB MUNI (MQB)

RNP APCH - GPS.

⚠ Circling NA to Rwy 18 and 36. Baro-VNAV and VDP NA when using Burlington IA altimeter setting. For uncompensated Baro-VNAV systems, LNAV/VNAV NA below -16°C or above 54°C. When local altimeter setting not received, use Burlington IA altimeter setting: increase LPV DA to 969 feet and LNAV/VNAV DA to 1173 feet; increase all MDA 80 feet and visibility Cats C and D ¼ SM.

MISSED APPROACH:
Climb to 2300 direct WULIN and hold.

AWOS-3 119.025	CHICAGO CENTER 135.6 316.1	UNICOM 122.8 (CTAF) 0
--------------------------	--------------------------------------	---------------------------------



4 NM Holding Pattern		2300 WULIN	
6000 2300		GP 3.00° TCH 40	
269°		089°	
TUYOB		WEKEM	
2300		1280	
6.5 NM		3.2 NM	
0.6 NM		1.1 NM	
GICSE 1.7 NM to RWY 09		1.1 NM to RWY 09	
RWY 09		RWY 09	
CATEGORY	A	B	C
LPV DA	906-1		200 (200-1)
LNAV/VNAV DA	1110-1 3/8		404 (500-1 3/8)
LNAV MDA	1100-1	394 (400-1)	1100-1 1/8 394 (400-1 1/8)
CIRCLING	1120-1 414 (500-1)	1260-1 554 (600-1)	1520-2 1/2 814 (900-2 1/2)

ELEV 706		TDZE 706
81		3719 X 190
5100 X 100		0.5% UP
089°		27
36		0.3% UP

REIL Rwy 9 and 27 0
HIRL Rwy 9-27 0