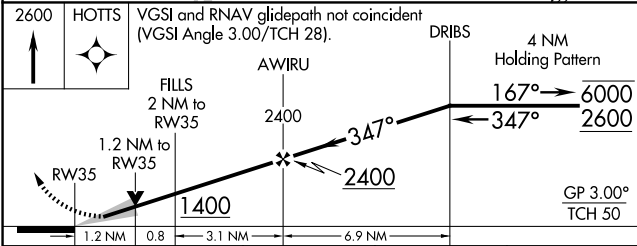
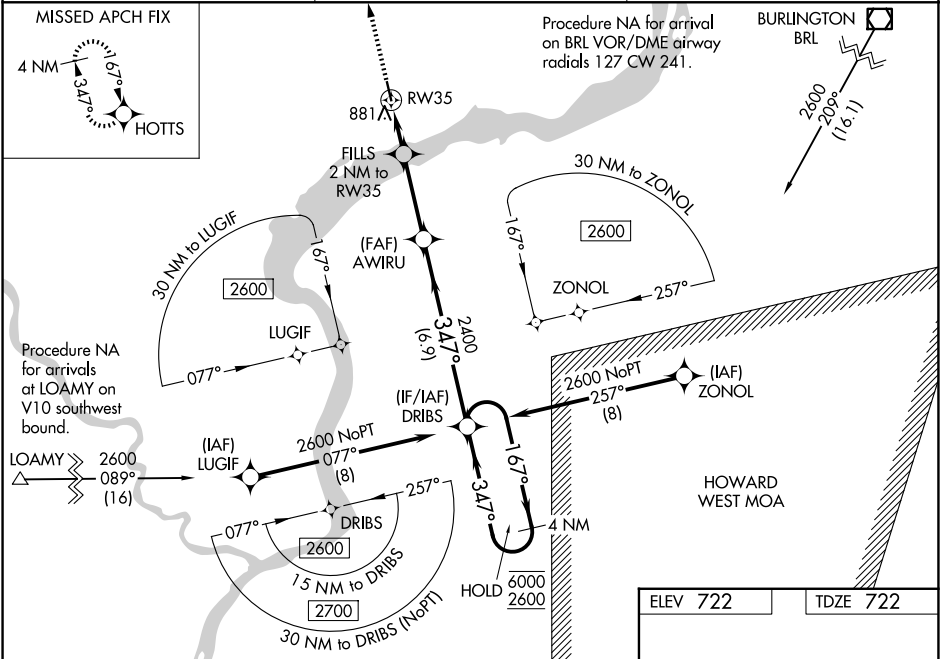


WAAS CH 70741 W35A	APP CRS 347°	Rwy Ldg TDZE 722 Apt Elev 722
--	------------------------	---

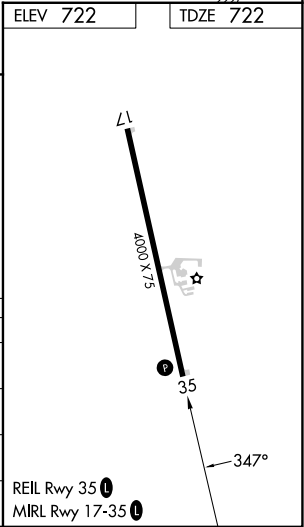
RNAV (GPS) RWY 35
FORT MADISON MUNI (F'SW)

RNP APCH - GPS. For uncompensated Baro-VNAV systems, LNAV/VNAV NA below -16°C or above 54°C. Baro-VNAV and VDP NA when using BRL altimeter setting. When local altimeter setting not received, use BRL altimeter setting; increase LPV DA to 1004 feet; increase LNAV/VNAV DA to 1190 feet and all visibilities 1/8 SM; increase all MDAs 40 feet and LNAV visibility Cats C and D 1/4 SM, and Circling visibility Cat D 1/4 SM.	MISSED APPROACH: Climb to 2600 direct HOTTs and hold.
---	---

AWOS-3 120.925	CHICAGO CENTER 135.6 316.1	UNICOM 122.8 (CTAF) 0
--------------------------	--------------------------------------	---------------------------------



CATEGORY	A	B	C	D
LPV DA	972-1 250 (300-1)			
LNAV/VNAV DA	1158-1¼ 436 (500-1¼)			
LNAV MDA	1140-1 418 (500-1)	1140-1½ 418 (500-1½)		
CIRCLING	1200-1 478 (500-1)	1260-1½ 538 (600-1½)	1500-2½ 778 (800-2½)	



NC-3, 07 AUG 2025 to 04 SEP 2025

NC-3, 07 AUG 2025 to 04 SEP 2025