

WAAS CH 82641 W17A	APP CRS 167°	Rwy Ldg TDZE Apt Elev	4000 722 722
--	------------------------	-----------------------------	---

RNAV (GPS) RWY 17

FORT MADISON MUNI (F'SW)

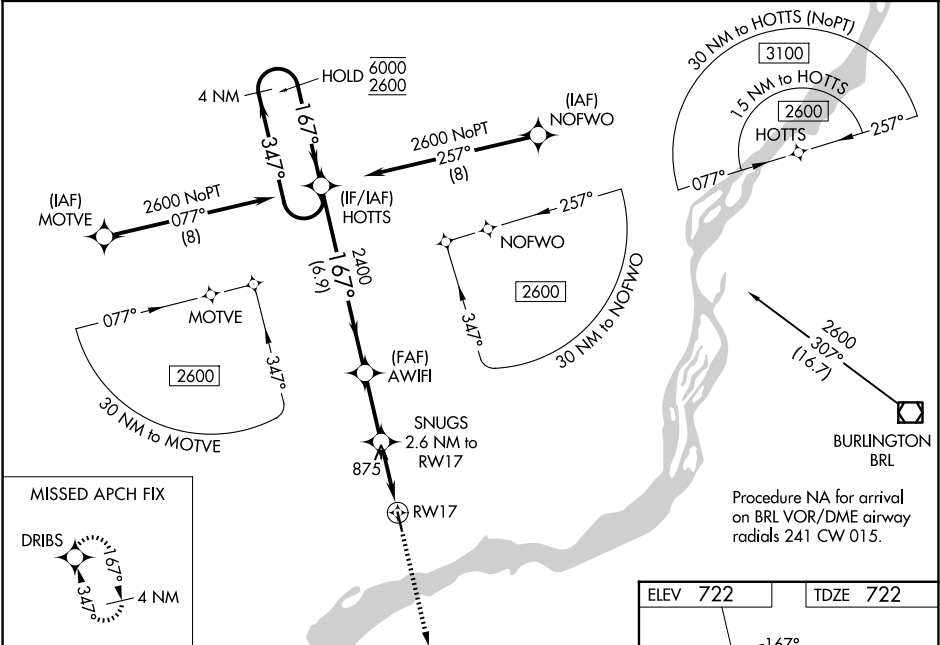
RNP APCH - GPS.

⚠

For uncompensated Baro-VNAV systems, LNAV/VNAV NA below -16°C or above 54°C. Baro-VNAV and VDP NA when using BRL altimeter setting. When local altimeter setting not received, use BRL altimeter setting; increase LPV DA to 1004 feet; increase LNAV/VNAV DA to 1004 feet; increase all MDAs 40 feet and LNAV visibility Cats C and D ¼ SM, and Circling visibility Cat D ¼ SM.

MISSED APPROACH: Climb to 2600 direct DRIBS and hold.

AWOS-3 120.925	CHICAGO CENTER 135.6 316.1	UNICOM 122.8 (CTAF) 📶
--------------------------	--------------------------------------	--



<p>4 NM Holding Pattern</p> <p>6000 ← 347°</p> <p>2600 → 167°</p> <p>GP 3.00°</p> <p>TCH 50</p> <p>HOTS</p> <p>AWIFI</p> <p>2400</p> <p>SNUGS</p> <p>2.6 NM to RW17</p> <p>1.2 NM to RW17</p> <p>RW17</p> <p>2600</p> <p>DRIBS</p>				
CATEGORY	A	B	C	D
LPV DA	972-1 250 (300-1)			
LNAV/VNAV DA	972-1 250 (300-1)			
LNAV MDA	1140-1	418 (500-1)	1140-1½	418 (500-1½)
CIRCLING	1200-1	478 (500-1)	1260-1½ 538 (600-1½)	1500-2½ 778 (800-2½)

