

APP CRS  
076°

Rwy Idg 4002  
TDZE 1228  
Apt Elev 1228

RNAV (GPS) RWY 8  
ROSTRAVER (FWQ)

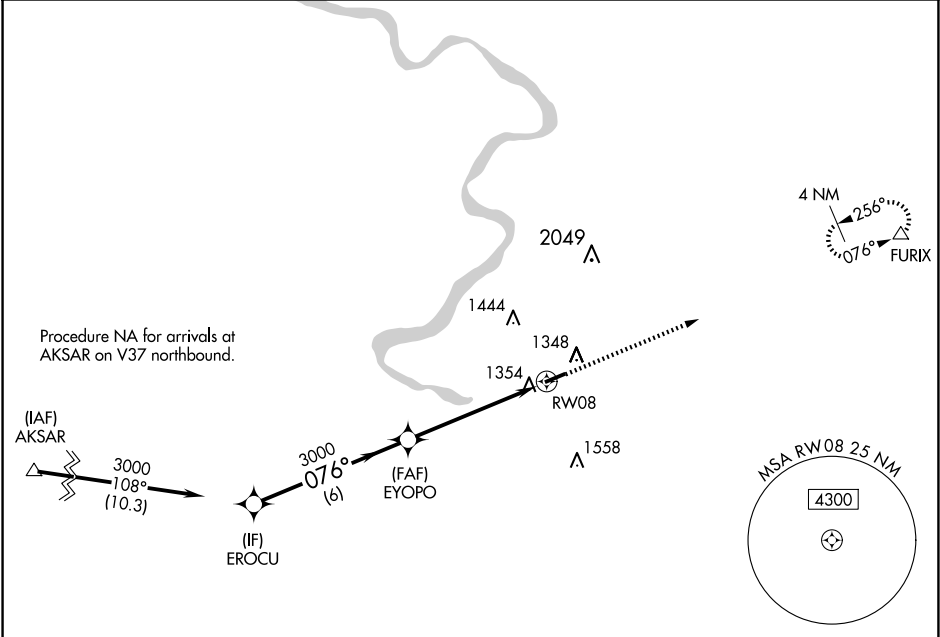
▼

▲ NA

When VGSi inop, Straight-in/Circling Rwy 8 procedure NA at night. DME/DME RNP-0.3 NA. When local altimeter setting not received, use Allegheny County altimeter setting and increase all MDA 40 feet; increase LNAV Cats C/D visibility 1/8 mile. Rwy 8 helicopter visibility reduction below 1 SM NA. Rwy 26 helicopter visibility reduction below 3/4 SM NA.

MISSED APPROACH:  
Climb to 3700 direct  
FURIX and hold.

AWOS-3 118.475	PITTSBURGH APP CON 119.35 337.4	UNICOM 122.8 (CTAF) 0
-------------------	------------------------------------	--------------------------



ELEV 1228

TDZE 1228

3700 FURIX

▲

3000

076°

3000

3.00° TCH 51

RW08

6 NM

5.4 NM

CATEGORY	A	B	C	D
LNAV MDA	1720-1	492 (500-1)	1720-1 3/8	492 (500-1 3/8)
CIRCLING	1720-1 492 (500-1)	1760-1 532 (600-1)	1760-1 1/2 532 (600-1 1/2)	1920-2 1/4 692 (700-2 1/4)

MIRL Rwy 8-26 0

REIL Rwys 8 and 26 0

NE-4, 07 AUG 2025 to 04 SEP 2025

NE-4, 07 AUG 2025 to 04 SEP 2025