

| | | |
|--|------------------------|---|
| WAAS CH 93732 W32A | APP CRS 322° | Rwy Idg TDZE 1130 Apt Elev 1136 |
|--|------------------------|---|

RNAV (GPS) RWY 32

MORRIS MUNI/CHARLIE SCHMIDT FLD (MOX)

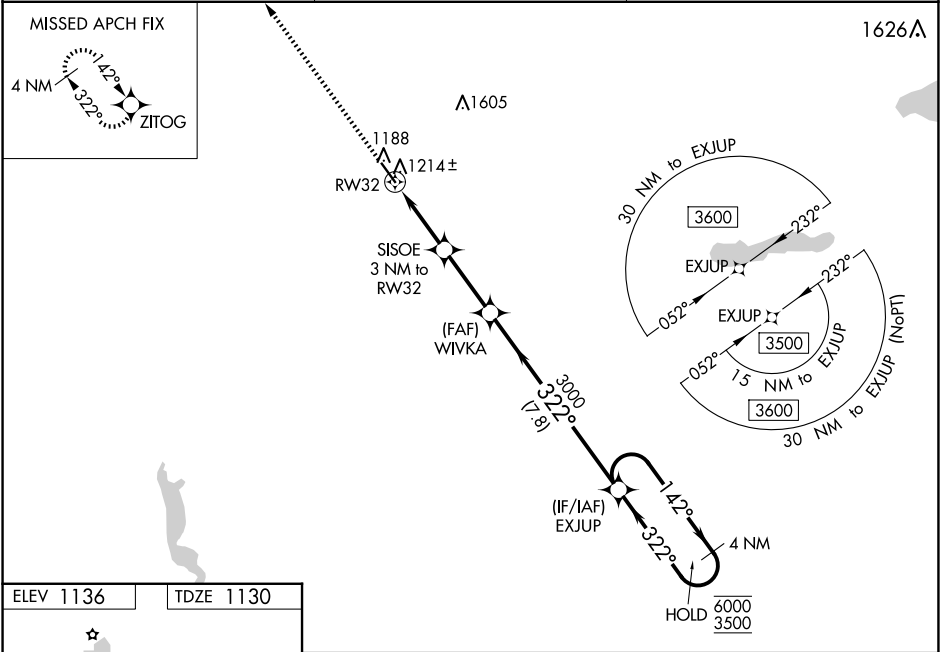
RNP APCH - GPS.

⚠

Baro-VNAV and VDP NA when using BBB altimeter setting. For uncompensated Baro-VNAV systems, LNAV/VNAV NA below -17°C or above 54°C. When local altimeter setting not received, use BBB altimeter setting and increase LPV DA to 1380 feet and LNAV/VNAV DA to 1477 feet. Increase all MDAs 60 feet and visibility LNAV Cat C ½ SM and visibility Circling Cat C ¼ SM.

MISSED APPROACH: Climb to 3000 direct ZITOG and hold.

| | | |
|--------------------------|--|---------------------------------|
| AWOS-3PT 118.6 | MINNEAPOLIS CENTER 126.1 269.2 | UNICOM 122.8 (CTAF) 0 |
|--------------------------|--|---------------------------------|



ELEV 1136 TDZE 1130

HIRL Rwy 14-32 0

REIL Rwy 14 and 32 0

322°

4699 X-75

3000

ZITOG

1 NM

2 NM

2.8 NM

7.8 NM

EXJUP

4 NM Holding Pattern

142°

322°

6000

3500

GP 3.00°

TCH 40

2100

3000

3000

322°

322°

3000

SISOE

3 NM to RW32

WIVKA

RW32

1 NM to RW32

| CATEGORY | A | B | C | D |
|--------------|-----------------------|-----------------------|-----------------------|----|
| LPV DA | 1330-1 | 200 (200-1) | | NA |
| LNAV/VNAV DA | 1419-1 | 289 (300-1) | | NA |
| LNAV MDA | 1480-1 | 350 (400-1) | | NA |
| CIRCLING | 1560-1 424 (500-1) | 1600-1 464 (500-1) | 1860-2 724 (800-2) | NA |

NC-1, 07 AUG 2025 to 04 SEP 2025

NC-1, 07 AUG 2025 to 04 SEP 2025