

WAAS CH <b>49032</b> <b>W14A</b>	APP CRS <b>142°</b>	Rwy Idg TDZE Apt Elev	<b>4899</b> <b>1132</b> <b>1136</b>
--	------------------------	-----------------------------	---

RNAV (GPS) RWY 14

MORRIS MUNI/CHARLIE SCHMIDT FLD (MOX)

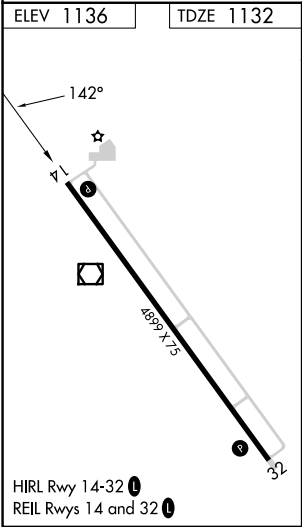
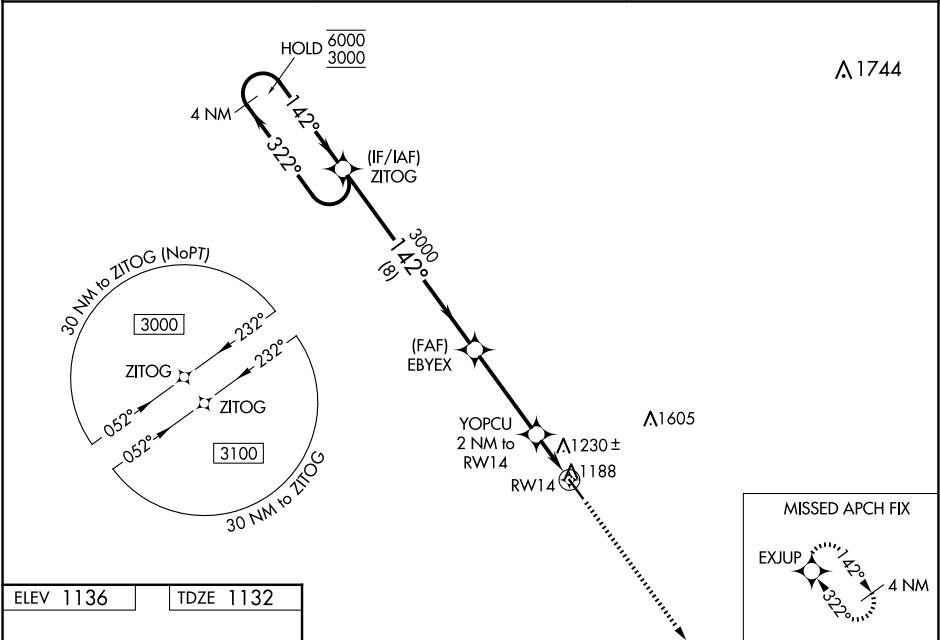
RNP APCH-GPS.

▼

Baro-VNAV and VDP NA when using BBB altimeter setting. For uncompensated Baro-VNAV systems, LNAV/VNAV NA below -17°C or above 54°C. When local altimeter setting not received, use BBB altimeter setting and increase LPV and LNAV/VNAV DA to 1440 feet. Increase all MDAs 60 feet and visibility LNAV Cat C ½ SM and visibility Circling Cat C ¼ SM.

MISSED APPROACH: Climb to 3500 direct EXJUP and hold.

AWOS-3PT <b>118.6</b>	MINNEAPOLIS CENTER <b>126.1 269.2</b>	UNICOM <b>122.8 (CTAF) 0</b>
--------------------------	--	---------------------------------



	4 NM Holding Pattern	ZITOG	EBYEX	YOPCU 2 NM to RW14	3500 EXJUP
	6000 ← 322° 3000 → 142°	3000	3000	1800	
	GP 3.00° TCH 40			1 NM to RW14	
		8 NM	3.8 NM	1 NM	1 NM
CATEGORY	A	B	C	D	
LPV DA	1382-1	250 (300-1)			NA
LNAV/VNAV DA	1382-1	250 (300-1)			NA
LNAV MDA	1480-1	348 (400-1)			NA
CIRCLING	1560-1 424 (500-1)	1600-1 464 (500-1)	1860-2 724 (800-2)		NA

NC-1, 07 AUG 2025 to 04 SEP 2025

NC-1, 07 AUG 2025 to 04 SEP 2025