

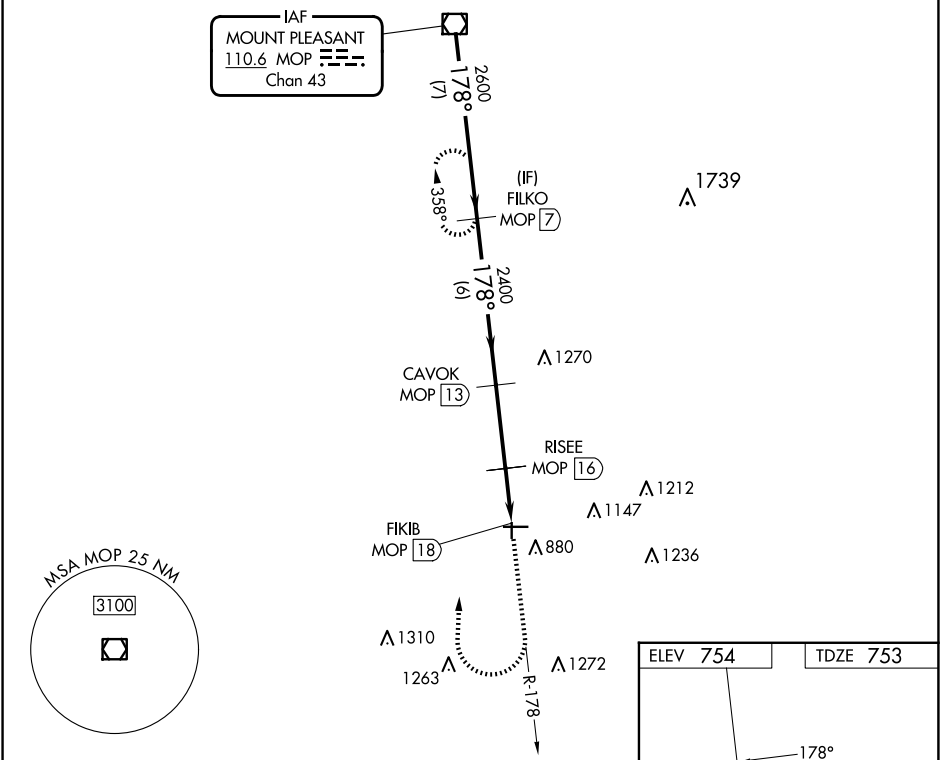
VOR/DME MOP	APP CRS	Rwy ldg	3198
<b>110.6</b>	<b>178°</b>	TDZE	<b>753</b>
Chan <b>43</b>		Apt Elev	<b>754</b>

VOR RWY 18

GRATIOT COMMUNITY (AMN)

<div><div>▼</div><div>▲ NA</div></div> <div>Night landing: Rwy 18, 36 NA. DME required. Straight-in Rwy 18 NA at night, Circling Rwy 18, 36 NA at night. Rwy 18 helicopter visibility reduction below 1 SM NA.</div>	MISSED APPROACH: Climb to 1200 then climbing right turn to 2600 on MOP VOR/DME R-178 direct FILKO/MOP VOR/DME 7 DME and hold.
--	---

AWOS-3P <b>124.175</b>	GREAT LAKES APP CON* <b>126.45 235.625</b>	UNICOM <b>122.8 (CTAF) 0</b>
---------------------------	---	---------------------------------



	MOP VOR/DME	FILKO MOP 7	CAVOK MOP 13	RISEE MOP 16	FIKIB MOP 18
	3000	2600	2400	1420	
	7 NM	6 NM	3 NM	2 NM	
CATEGORY	A	B	C	D	
S-18	1140-1	387 (400-1)	1140-1¼ 387 (400-1¼)	NA	
CIRCLING	1180-1 426 (500-1)	1220-1 466 (500-1)	1460-2 706 (800-2)	NA	

