

WAAS CH 90228 W09A	APP CRS 095°	Rwy Idg TDZE Apt Elev	5004 753 754
--	------------------------	-----------------------------	---

RNAV (GPS) RWY 9

GRATIOT COMMUNITY (AMN)

RNP APCH.

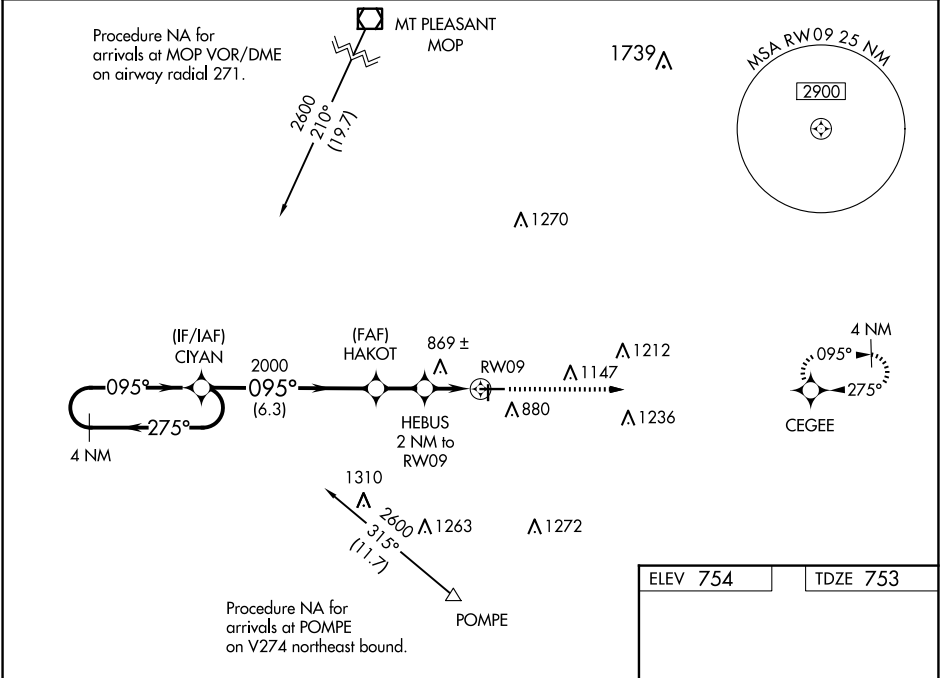
⚠

⚠

Baro-VNAV NA when using Mount Pleasant altimeter setting. For uncompensated Baro-VNAV systems, LNAV/VNAV NA below -16°C or above 39°C. Rwy 9 helicopter visibility reduction below ¾ SM NA. When local altimeter setting not received, use Mount Pleasant altimeter setting and increase all DA 42 feet and VNAV all Cats visibility ½ mile, increase all MDA 60 feet, and LNAV Cat C and D visibility ¼ mile. VDP NA when using Mount Pleasant altimeter setting.

MISSED APPROACH: Climb to 2600 direct CEGEE and hold.

AWOS-3P 124.175	GREAT LAKES APP CON* 126.45 235.625	UNICOM 122.8 (CTAF) 0
---------------------------	---	---------------------------------



4 NM Holding Pattern

VGSI and RNAV glidepath not coincident (VGSI Angle 3.00/TCH 40).

2600 CEGEE

GP 3.00° TCH 55

CIYAN

HAKOT

HEBUS 2 NM to RW09

*1.2 NM to RW09

RW09

6.3 NM 1.8 NM 0.8 NM 1.2 NM

CATEGORY	A	B	C	D
LPV DA	1028-1 275 (300-1)			
LNAV/VNAV DA	1156-1¾ 403 (500-1¾)			
LNAV MDA	1160-1 407 (500-1)		1160-1½ 407 (500-1½)	

ELEV 754 TDZE 753

095°

81

5004 X 75

27

3188 X 75

36

REIL Rwy 9 and 27 0
MIRL Rwy 9-27 and 18-36 0