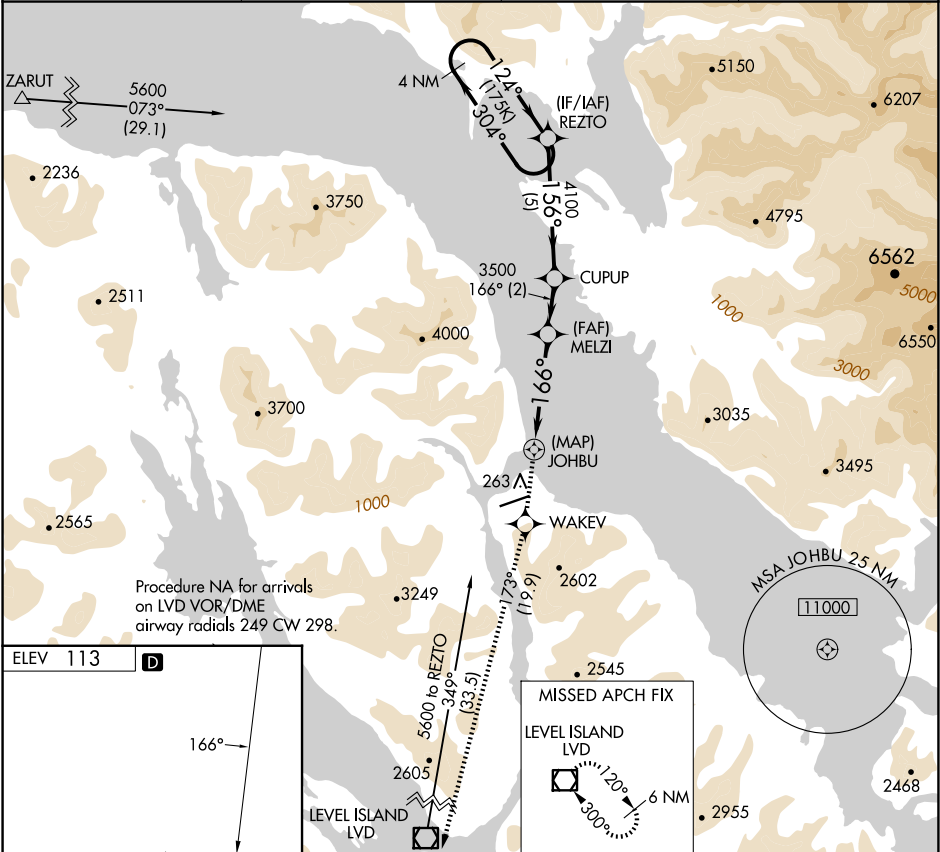


APP CRS 166°	Rwy Idg TDZE Apt Elev	N/A N/A 113	RNAV (GPS)-B
PETERSBURG JAMES A JOHNSON (PSG) (PAPG)			

When local altimeter setting not received, use Wrangell altimeter setting and increase all MDA 80 feet. Circling NA southeast of Rwy 5-23. DME/DME RNP-0.3 NA.	MISSED APPROACH: Climb to 6000 direct WAKEV and on track 173° to LVD VOR/DME and hold, continue climb-in-hold to 6000.
--	--

AWOS-3P 125.8	ANCHORAGE CENTER 118.0	SITKA RADIO 122.35	CTAF 122.5
------------------	---------------------------	-----------------------	---------------



ELEV 113	D	166°	6000	WAKEV	tr 173°	LVD	REZTO	4 NM Holding Pattern
HIRL Rwy 5-23		REIL Rwy 5	CUPUP					304° → 5600
166°		6400 X 150	MELZI					156° → 4100
166°		6400 X 150	JOHBU					166° → 3500
166°		6400 X 150	173°					124° ← 5600
166°		6400 X 150	1.7					4.1 NM
166°		6400 X 150	2 NM					5 NM
166°		6400 X 150	CATEGORY					A
166°		6400 X 150	B					C
166°		6400 X 150	D					NA
166°		6400 X 150	CIRCLING					2460-2
166°		6400 X 150	3080-3					2967 (3000-3)
166°		6400 X 150	NA					