

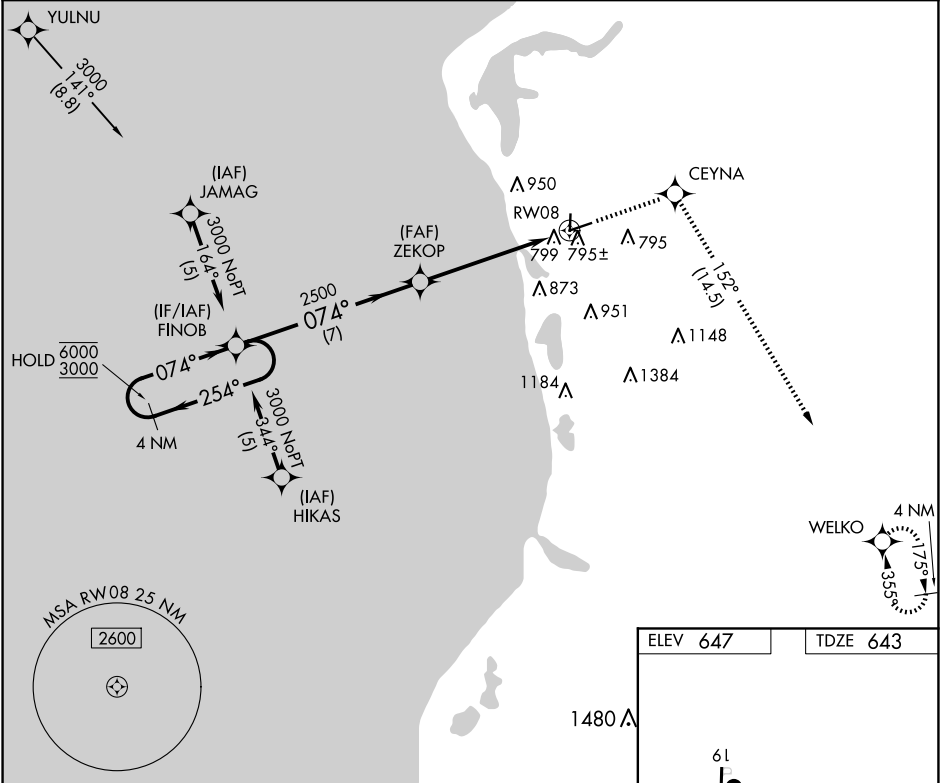
APP CRS	Rwy Idg	5003
074°	TDZE	643
	Apt Elev	647

RNAV (GPS) RWY 8

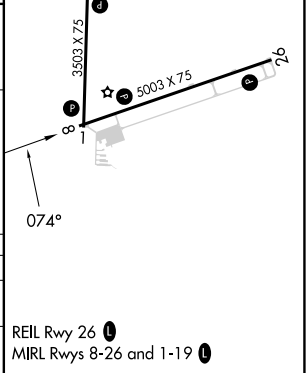
MASON COUNTY (LDM)

RNP APCH-GPS.	MISSED APPROACH: Climb to 3000 direct CEYNA and on track 152° to WELKO and hold.
▼ Circling Rwy 1, 19 NA at night. ▲ Rwy 8 helicopter visibility reduction below ¾ SM NA.	

AWOS-3 119.925	MINNEAPOLIS CENTER 120.85 322.35	UNICOM 123.0 (CTAF) 0
-------------------	-------------------------------------	--------------------------



4 NM Holding Pattern		Visual Segment - Obstacles.		3000	CEYNA	WELKO
FINOB		ZEKOP		tr	152°	
6000 ← 254°		074° →		074°		
3000		2500		1.5 NM to RW08		
		7 NM		4.2 NM		
CATEGORY	A	B	C	D		
LNNAV MDA	1140-1	497 (500-1)	1140-1⅓	497 (500-1⅓)		
CIRCLING	1160-1 513 (600-1)	1200-1 553 (600-1)	1260-1¾ 613 (700-1¾)	1460-2¾ 813 (900-2¾)		



EC-1, 07 AUG 2025 to 04 SEP 2025

EC-1, 07 AUG 2025 to 04 SEP 2025