

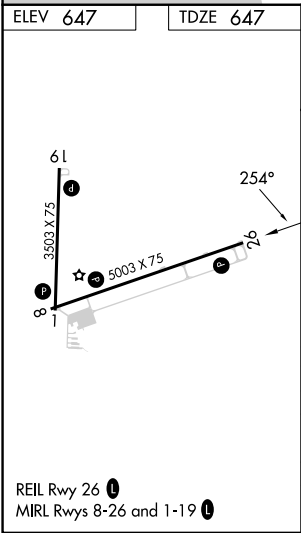
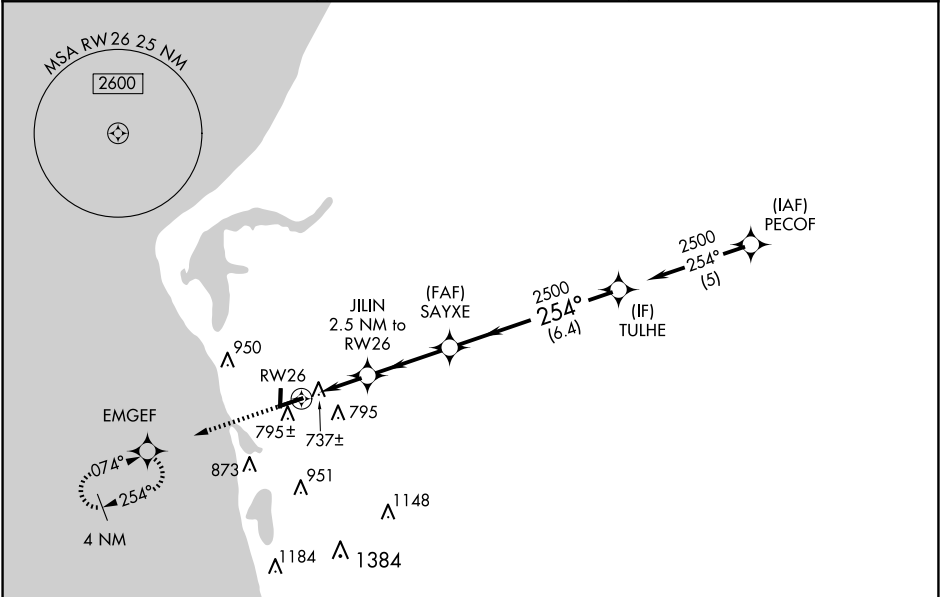
WAAS CH 49206 W26A	APP CRS 254°	Rwy Idg 5003 TDZE 647 Apt Elev 647
--	------------------------	---

RNAV (GPS) RWY 26

MASON COUNTY (LDM)

RNP APCH-GPS.		MISSED APPROACH: Climb to 2500 direct EMGEF and hold.
<div><div></div><div></div><div>Circling Rwy 1, 19 NA at night. Rwy 26 helicopter visibility reduction below ¾ SM NA. For uncompensated Baro-VNAV systems, LNAV/VNAV NA below -16°C or above 54°C.</div></div>		

AWOS-3 119.925	MINNEAPOLIS CENTER 120.85 322.35	UNICOM 123.0 (CTAF) 0
--------------------------	--	---------------------------------



2500 EMGEF		VGSI and RNAV glidepath not coincident (VGSI Angle 3.00/TCH 25).			
JILIN 2.5 NM to RW26		SAYXE 2500	TULHE		
1.1 NM to RW26		1480	254°	2500	GP 3.00° TCH 40
1.1		1.4 NM	3.1 NM	6.4 NM	
CATEGORY	A	B	C	D	
LPV DA	975-1		328 (400-1)		
LNAV/ VNAV DA	1020-1		373 (400-1)		
LNAV MDA	1020-1		373 (400-1)		
CIRCLING	1160-1 513 (600-1)	1200-1 553 (600-1)	1260-1¾ 613 (700-1¾)	1460-2¾ 813 (900-2¾)	