

NDB CNH  
233

APP CR  
048°

Rwy Ldg	TDZE	Apt Elev

N/A  
N/A  
544

NDB-A  
CLAREMONT MUNI (CNH)

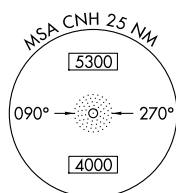
**T**

 NA  
 -24°C

Procedure NA at night. Obtain local altimeter setting on CTAF; when not received, use Springfield altimeter setting and increase all MDA 20 feet.

**MISSED APPROACH:** Climbing left turn to 3500 via CNH NDB 228° bearing outbound then right turn direct CNH NDB and hold.

BOSTON CENTER  
134.7 269.475

UNICOM  
122.7 (CTAF) **L**

LEBANON  
113.7 LEB ::  
Chan 84

3291 A

 $1119 \pm \Delta$ 

CLAREMONT  
233 CNH

CONCORD  
112.9 CON   
Chgn 76

500  
- 300  
(36)

Remain  
within 10 NM

† CNH  
NDE

3500

CNH

2800:

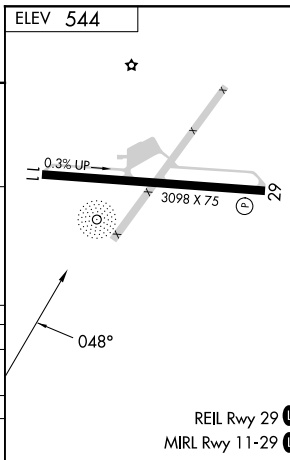
\* 2060 when using Springfield altimeter setting.

LEB

8°  
\*2040

† Maintain 3500 or above until established outbound for procedure turn.

CATEGORY	A	B	C	D
CIRCLING	2040-1½ 1496 (1500-1½)	2040-1½ 1496 (1500-1½)		NA
EVAC DME MINIMUMS				
CIRCLING	1520-1½ 976 (1000-1½)	1740-1½ 1196 (1200-1½)		NA



CLAREMONT, NEW HAMPSHIRE  
Amdt 1D 30DEC21

43°22'N-72°22'W

CLAREMONT MUNI (CNH)  
NDB-A

NE-1, 07 AUG 2025 to 04 SEP 2025

NE-1, 07 AUG 2025 to 04 SEP 2025