

WAAS CH 53527 W28A	APP CRS 275°	Rwy Idg 5001 TDZE 682 Apt Elev 684
--	------------------------	---

RNAV (GPS) RWY 28

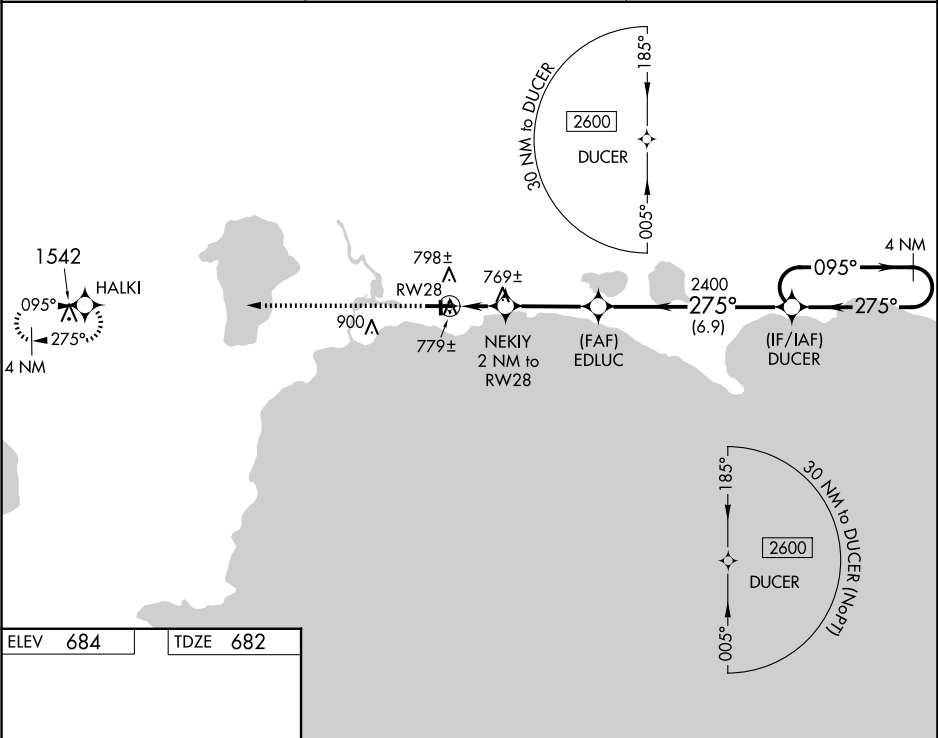
SCHOOLCRAFT COUNTY (ISQ)

⚠

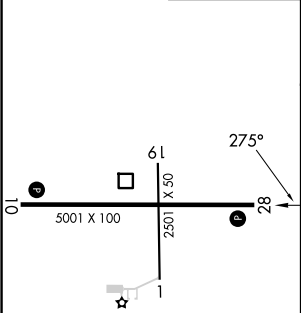
When local altimeter setting not received, use Beaver Island alimeter setting and increase all MDA 80 feet, increase LP Cat C and D and Circling Cat D visibility ¼ SM, LNAV Cat C and D visibility ⅜ SM, Circling Cat C visibility ½ SM. When VGSI inop, Straight-In/Circling Rwy 28 procedure NA at night. DME/DME RNP-0.3 NA. Visibility reduction by helicopters NA. Circling to Rwy 1/19 NA at night.

MISSED APPROACH:
Climb to 2600 direct HALKI and hold.

AWOS-3 118.775	MINNEAPOLIS APP CON 134.6 354.05	UNICOM 122.8 (CTAF) 0
--------------------------	--	---------------------------------



ELEV 684	TDZE 682
-----------------	-----------------



2600

↑

HALKI

✦

4 NM Holding Pattern

DUCER

095° →

← 275°

2600

EDLUC

275°

2400

NEKIY

2 NM to RW28

3.00° TCH 38

1340

RW28

2 NM

3.3 NM

6.9 NM

CATEGORY	A	B	C	D
LP MDA	1020-1		338 (400-1)	
LNAV MDA	1040-1		358 (400-1)	
CIRCLING	1120-1 436 (500-1)	1140-1 456 (500-1)	1280-1½ 596 (600-1½)	1300-2 616 (700-2)

REIL Rwy 28 0
MIRL Rwy 10-28 0