

APP CRS  
095°

Rwy Idg  
5001

TDZE  
684

Apt Elev  
684

RNAV (GPS) RWY 10

SCHOOLCRAFT COUNTY (ISQ)

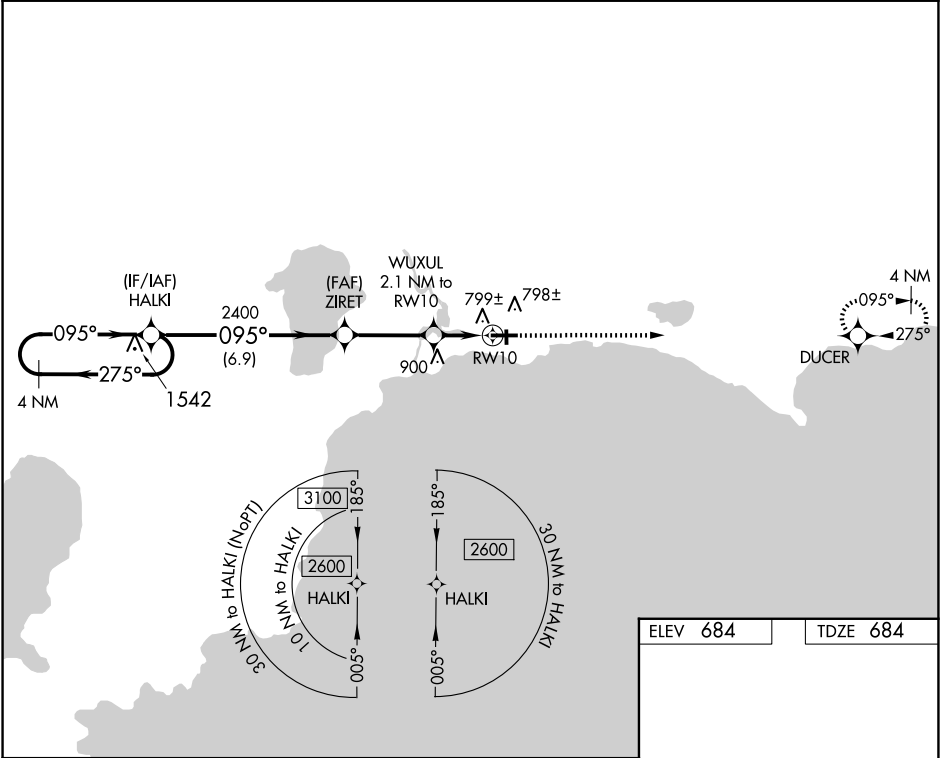
▼

▲

DME/DME RNP-0.3 NA. Helicopter visibility reduction below 1 SM NA. When local altimeter setting not received, use Beaver Island altimeter setting and increase all MDA 80 feet, increase LNAV Cat C and D visibility  $\frac{3}{8}$  SM, Circling Cat C visibility  $\frac{1}{2}$  SM and Circling Cat D visibility  $\frac{1}{4}$  SM. When VGSI inop, Straight-In/Circling Rwy 10 procedure NA at night. When VGSI inop, Circling Rwy 28 NA at night. Night landing: Rwy 1, 19 NA.

MISSED APPROACH:  
Climb to 2600 direct DUCER and hold.

AWOS-3 118.775	MINNEAPOLIS APP CON 134.6 354.05	UNICOM 122.8 (CTAF) ①
-------------------	-------------------------------------	--------------------------



4 NM Holding Pattern

HALKI

2600 ← 275°

095° →

095°

ZIRET

2400

3.00° TCH 35

1380

WUXUL 2.1 NM to RW10

RW10

6.9 NM

3.2 NM

2.1 NM

ELEV 684

TDZE 684

095°

61

501 X 100

2501

28

1

REIL Rwy 28 ①

MIRL Rwy 10-28 ①

CATEGORY	A	B	C	D
LNAV MDA	1060-1 376 (400-1)			
CIRCLING	1120-1 436 (500-1)	1140-1 456 (500-1)	1280-1½ 596 (600-1½)	1300-2 616 (700-2)