

WAAS CH 72713 W27A	APP CRS 268°	Rwy Idg TDZE 925 Apt Elev 926	5100 925 926
--	------------------------	---	---

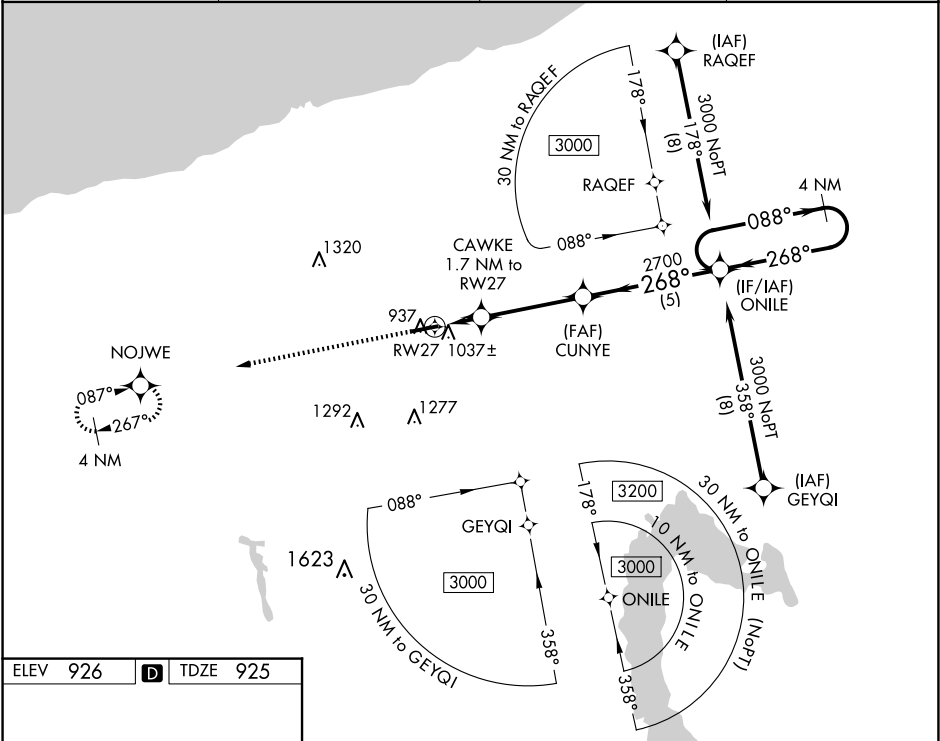
RNAV (GPS) RWY 27

NORTHEAST OHIO RGNL (HZY)

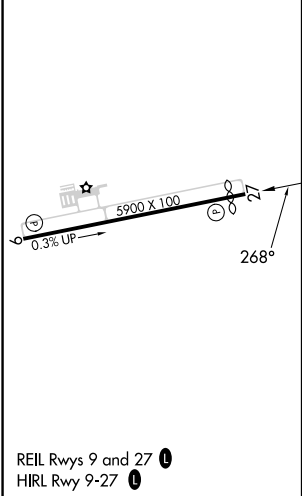
For uncompensated Baro-VNAV systems, LNAV/VNAV NA below -21°C (-5°F) or above 54°C (130°F). DME/DME RNP-0.3 NA.

MISSED APPROACH: Climb to 2800 direct NOJWE and hold.

ASOS 118.325	BUFFALO APP CON ★ 121.0	UNICOM 122.8 (CTAF)	123.3
------------------------	-----------------------------------	-------------------------------	--------------



ELEV 926	D	TDZE 925
----------	---	----------



2800

NOJWE

*LNAV only

CUNYE

2700

1.7 NM to RW27

CUNYE

2700

1.4 NM to RW27

RW27

1.4

0.3 NM

3.7 NM

5 NM

ONILE

4 NM Holding Pattern

088°

268°

3000

GP 3.00°

TCH 45

CATEGORY	A	B	C	D
LPV DA		1184-7/8	259 (300-7/8)	
LNAV/VNAV DA		1198-7/8	273 (300-7/8)	
LNAV MDA		1300-1	375 (400-1)	
CIRCLING	1340-1 414 (500-1)	1380-1 454 (500-1)	1500-1½ 574 (600-1½)	1580-2 654 (700-2)

EC-2, 07 AUG 2025 to 04 SEP 2025

EC-2, 07 AUG 2025 to 04 SEP 2025