

VOR/DME BJC	APP CRS	Rwy Ldg	30L	30R
115.4	284°	TDZE	7002	9000
Chan 101		Apt Elev	5673	5673

VOR/DME RWY 30L/R
ROCKY MOUNTAIN METRO (BJC)

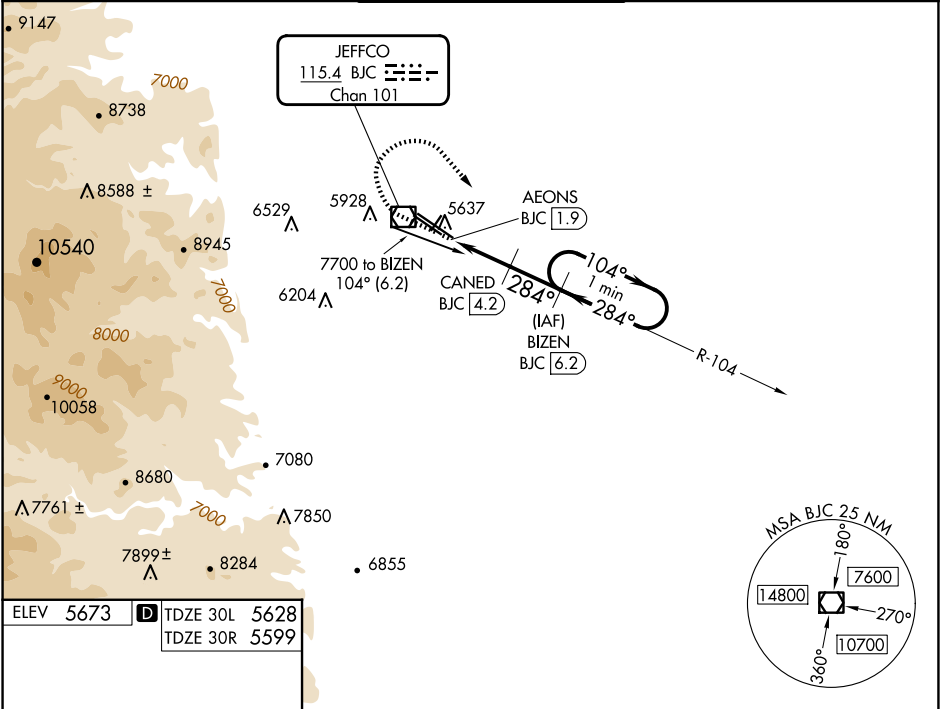
NA

When local altimeter setting not received, use Denver Intl altimeter setting and increase all MDA 100 feet. Increase S-30L Cats C/D visibility to 1 mile and Circling Cat C to 2¼ mile. For inoperative MALSR, increase S-30R all Cats visibility to 1 mile. For inoperative MALSR, when using Denver Intl altimeter setting, increase S-30R Cats C/D visibility to 1½ mile.

MALSR
Rwy 30R

MISSED APPROACH: Climb to 6100 then climbing right turn to 7000 on heading 150° and on BJC VOR/DME R-104 to BIZEN/BJC 6.2 DME and hold.

ATIS 126.25	DENVER APP CON 125.12 263.02	METRO TOWER ★ 118.6(CTAF) 0 233.7	GND CON 121.7	CLNC DEL 132.6
----------------	---------------------------------	--------------------------------------	------------------	-------------------



ELEV 5673

D TDZE 30L 5628
TDZE 30R 5599

HIRL Rwy 12L-30R **L**

MIRL Rwy 3-21 and 12R-30L **L**

REIL Rwy 12L, 12R and 30L **L**

6100

7000

hdg 150°

BJC R-104

BIZEN BJC 6.2

CANED BJC 4.2

AEONS BJC 1.9

6360

30R 2.3 NM

30L 2.8 NM

2 NM

BIZEN BJC 6.2

One Minute Holding Pattern

104°

284°

7000

CATEGORY	A	B	C	D
S-30R	5920-½ 321 (300-½)		5920-¾ 321 (300-¾)	
S-30L	5920-1 292 (300-1)		5920-⅞ 292 (300-⅞)	
C CIRCLING	6180-1 507 (600-1)	6240-1 567 (600-1)	6360-2 687 (700-2)	6860-3 1187 (1200-3)