


WAAS CH 82707 W30B	APP CRS 295°	Rwy Ldg TDZE 5599 Apt Elev 5673
--	------------------------	---

RNAV (GPS) RWY 30R
ROCKY MOUNTAIN METRO (BJC)

NA Baro-VNAV and VDP NA when using Denver Intl altimeter setting. For uncompensated Baro-VNAV systems, LNAV/VNAV NA below -26°C (-14°F) or above 47°C (116°F). DME/DME RNP-0.3 NA. When local altimeter setting not received, use Denver Intl altimeter setting and increase all DA 82 feet and all MDA 100 feet, increase LNAV/VNAV all Cats, LNAV Cat C/D and Circling Cat C visibility ¼ mile. For inoperative MALSR, increase LNAV/VNAV all Cats visibility to 1 ½ mile and LNAV Cat C/D visibility to 1 mile. For inoperative MALSR, when using Denver Intl altimeter setting, increase LPV all Cats visibility to 1 mile, LNAV/VNAV all Cats visibility to 1 ½ mile and LNAV Cat A/B visibility to 1 mile and Cat C/D visibility to 1 ½ mile.

MALSR



MISSED APPROACH: Climb to 6300 then climbing right turn to 10300 direct HYGEN and hold, continue climb-in-hold to 10300.

ATIS 126.25	DENVER APP CON 125.12 263.02	METRO TOWER★ 118.6 (CTAF) 233.7	GND CON 121.7	CLNC DEL 132.6
-----------------------	--	---	-------------------------	--------------------------

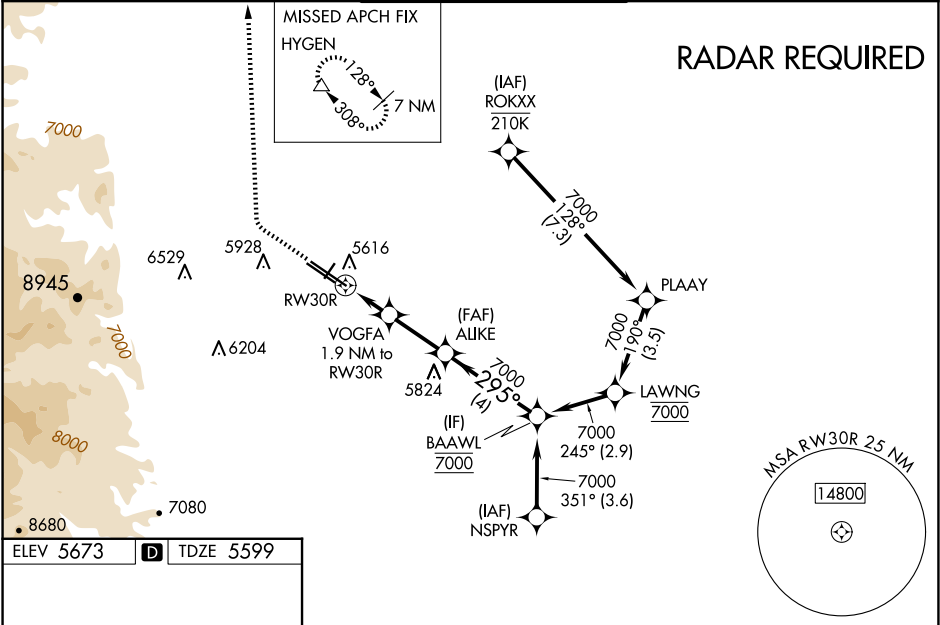


Diagram illustrating the approach path and altitudes for various categories (A, B, C, D). The path is defined by a series of altitudes and distances:

- 6300 (Initial Altitude)
- 10300 (Initial Altitude)
- HYGEN (Initial Altitude)
- ALUKE 7000 (Altitude)
- BAAWL 7000 (Altitude)
- VOGFA 1.9 NM to RW30R (Distance)
- *LNAV only.
- *1 NM to RW30R (Distance)
- 6220* (Altitude)
- 295° (Heading)
- 7000 (Altitude)
- GP 3.00° TCH 52 (Grade and Threshold Crossing Height)

Additional information:

- 12R (Runway)
- 12L (Runway)
- 10% DOWN (Gradient)
- 9000 X 100 (Altitude and Distance)
- 8000 X 75 (Altitude and Distance)
- 7002 X 75 (Altitude and Distance)
- TWR (Tower)
- 3 (Distance)
- 1% UP (Gradient)
- 30L (Runway)
- 30R (Runway)
- 295° (Heading)

HIRL Rwy 12L-30R **D**
MIRL Rwy 3-21 and 12R-30L **D**
REIL Rwy 12L, 12R and 30L **D**

6300	10300	HYGEN	ALUKE	BAAWL
↑	↷	△	7000	7000
LNAV only.		VOGFA 1.9 NM to RW30R	6220	295°
RW30R		*1 NM to RW30R	7000	GP 3.00° TCH 52
1 NM		0.9	2.4 NM	4 NM
CATEGORY	A	B	C	D
LPV DA	5799-½		200 (200-½)	
LNAV/ VNAV DA	5900-⅝		301 (300-⅝)	
LNAV MDA	5940-½		5940-⅝ 341 (300-⅝)	
C CIRCLING	6180-1 507 (600-1)	6240-1 567 (600-1)	6360-2 687 (700-2)	6860-3 1187 (1200-3)

SW-1, 07 AUG 2025 to 04 SEP 2025

SW-1, 07 AUG 2025 to 04 SEP 2025