


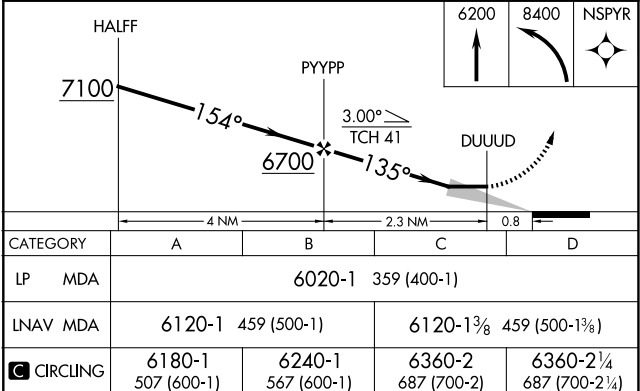
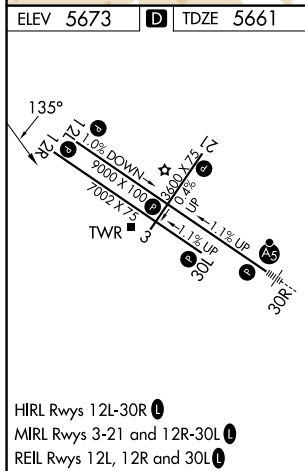
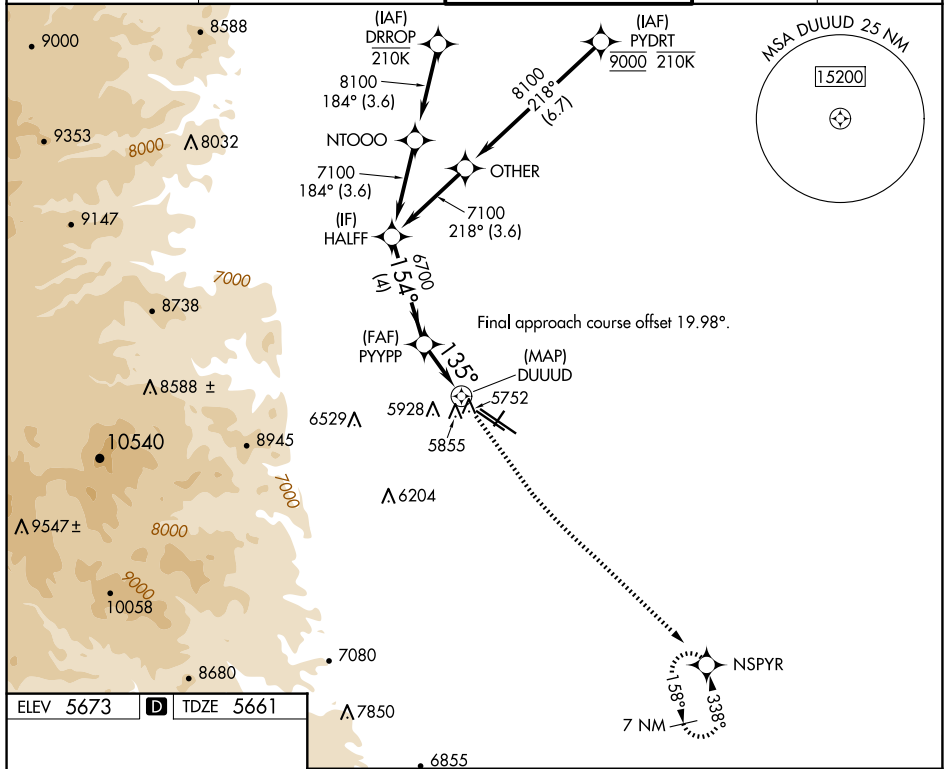
25163

RNAV (GPS) RWY 12L
ROCKY MOUNTAIN METRO (BJC)

 Circling NA for Cat D southwest of Rwy 12R-30L

MISSED APPROACH: Climb to 6200 then climbing left turn to 8400 direct NSPYR and hold.

ATIS 126.25	DENVER APP CON 125.12 263.02	METRO TOWER ★ 118.6 (CTAF) 0 233.7	GND CON 121.7	CLNC DEL 132.6
-----------------------	--	--	-------------------------	--------------------------



ROCKY MOUNTAIN METRO (BJC)
RNAV (GPS) RWY 12L

SW-1, 07 AUG 2025 to 04 SEP 2025