

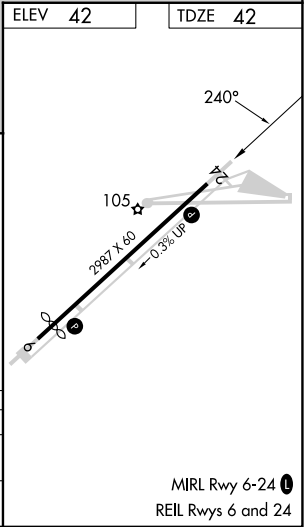
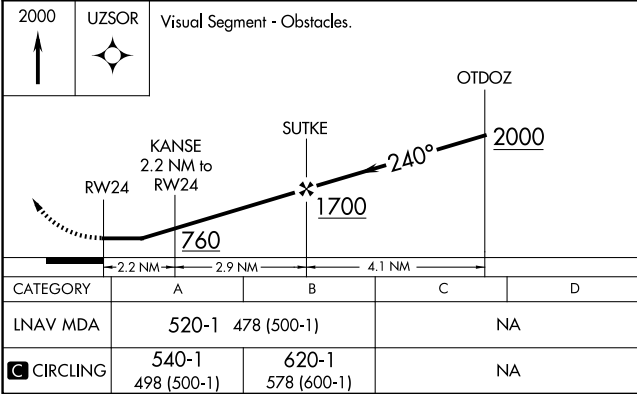
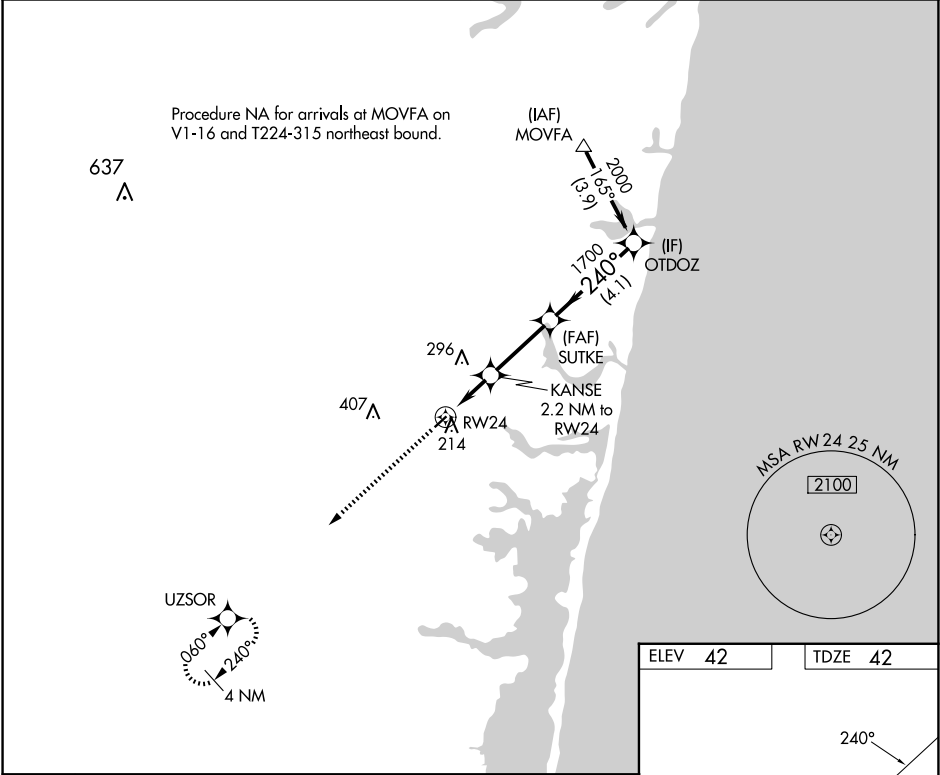
APP CRS	Rwy Idg	2987
240°	TDZE	42
	Apt Elev	42

RNAV (GPS) RWY 24

LAKEWOOD (N12)

RNP APCH - GPS.	MISSED APPROACH: Climb to 2000 direct UZSOR and hold.
▼ ▲ NA	Rwy 24 helicopter visibility reduction below 1 SM NA. Straight-in Rwy 24 NA at night, Circling Rwy 24 NA at night.

AWOS-AV 122.8	MC GUIRE APP CON 126,475 363,8	GCO 121.725	UNICOM 122.8 (CTAF) 0
------------------	-----------------------------------	----------------	--------------------------



NE-2, 07 AUG 2025 to 04 SEP 2025

NE-2, 07 AUG 2025 to 04 SEP 2025