

WAAS CH 99302 W01A	APP CRS 010°	Rwy Idg TDZE Apt Elev	5001 1255 1255
--	------------------------	-----------------------------	---

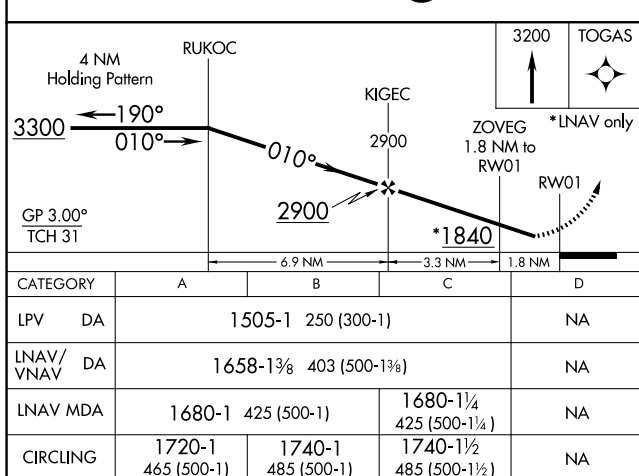
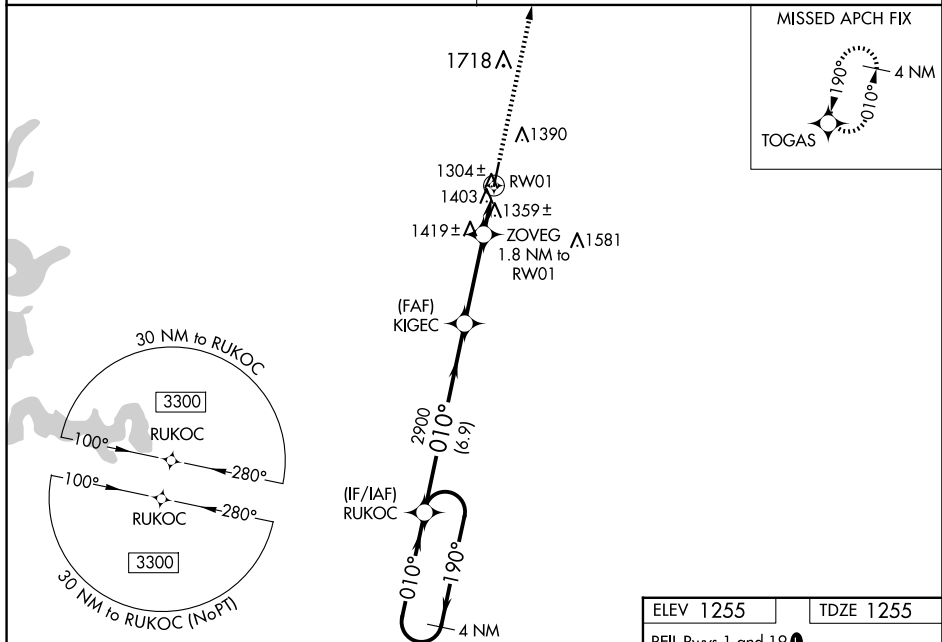
RNAV (GPS) RWY 1
NEOSHO HUGH ROBINSON (EOS)

▼ Baro-VNAV NA when using Joplin altimeter setting. For uncompensated Baro-VNAV systems, LNAV/VNAV NA below -17°C (2°F) or above 54°C (130°F). DME/DME RNP-0.3 NA.

▲ Visibility reduction by helicopters NA. When local altimeter setting not received, use Joplin altimeter setting and increase all DA 87 feet and all MDA 100 feet; increase LPV all Cats visibility ½ mile, LNAV/VNAV all Cats visibility ¾ mile, and LNAV Cat C visibility ¼ mile. When VGSI inop, Straight-in/Circling to Rwy 1 NA at night.

MISSED APPROACH:
Climb to 3200 direct
TOGAS and hold.

KANSAS CITY CENTER 128.6 282,325	AUNICOM 122.8 (CTAF) 0
--	----------------------------------



CATEGORY		A	B	C	D
LPV	DA	1505-1 250 (300-1)			NA
RNAV/ VNAV	DA	1658-1 $\frac{3}{8}$ 403 (500-1 $\frac{3}{8}$)			NA
RNAV	MDA	1680-1 425 (500-1)		1680-1 $\frac{1}{4}$ 425 (500-1 $\frac{1}{4}$)	NA
CIRCLING		1720-1 465 (500-1)	1740-1 485 (500-1)	1740-1 $\frac{1}{2}$ 485 (500-1 $\frac{1}{2}$)	NA

ELEV 1255	TDZE 1255
REIL Rwy 1 and 19 L	
MIRL Rwy 1-19 L	

