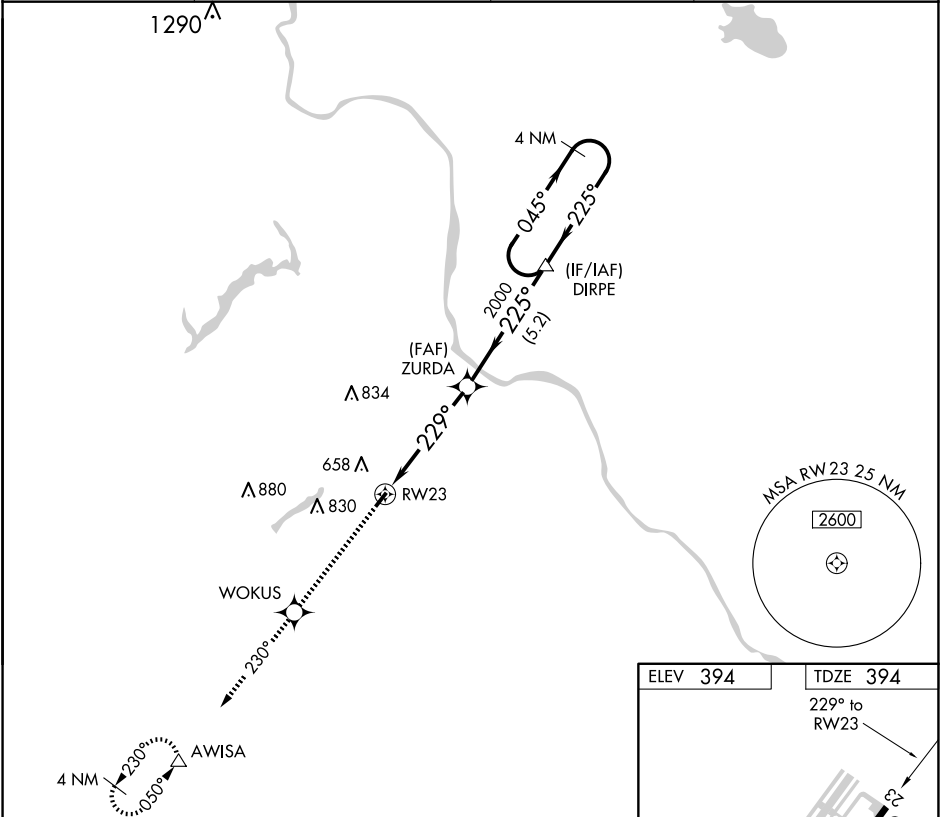


APP CRS	Rwy Idg	3004
229°	TDZE	394
	Apt Elev	394

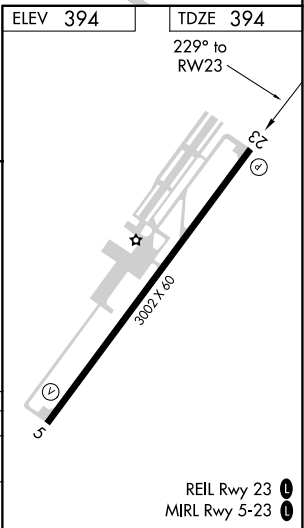
RNAV (GPS) RWY 23
DOYLESTOWN (DYL)

<div><div>▼</div><div>▲</div></div> <div>DME/DME RNP-0.3 NA. When local altimeter setting not received, use Trenton altimeter setting and increase all MDA 60 feet. Rwy 23: helicopter visibility reduction below 1 SM NA.</div>	MISSED APPROACH: Climb to 3000 direct WOKUS and via track 230° to AWISA and hold.
--	---

ASOS 118.875	PHILADELPHIA APP CON 123.8 291.7	CLNC DEL 118.55	UNICOM 122.975 (CTAF) 0
-----------------	-------------------------------------	--------------------	----------------------------



3000	WOKUS	fr 230°	AWISA	VGSI and descent angles not coincident (VGSI Angle 3.00/TCH 20).	4 NM Holding Pattern
<div><div>RW23</div><div>ZURDA</div><div>DIRPE</div><div>3000</div><div>229°</div><div>225°</div><div>045°</div><div>225°</div><div>3.04° TCH 40</div><div>4.9 NM</div><div>5.2 NM</div></div>					
CATEGORY	A	B	C	D	
RNAV MDA	1040-1	646 (700-1)	NA		
CIRCLING	1040-1	646 (700-1)	NA		



NE-4, 07 AUG 2025 to 04 SEP 2025

NE-4, 07 AUG 2025 to 04 SEP 2025