

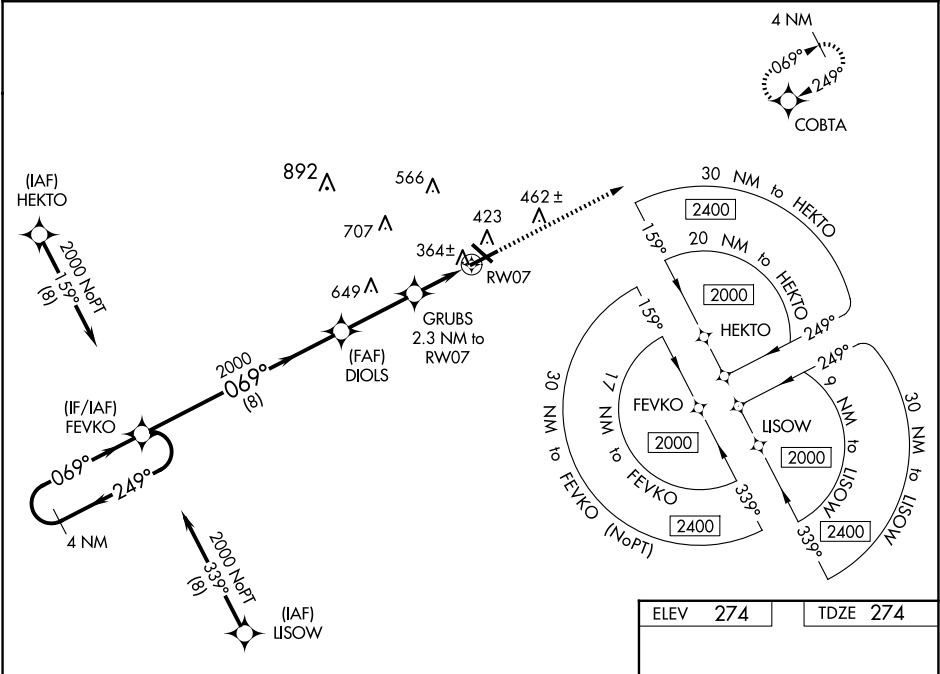
WAAS CH <b>66037</b> <b>W07A</b>	APP CRS <b>069°</b>	Rwy Ldg TDZE Apt Elev	<b>6002</b> <b>274</b> <b>274</b>
--	------------------------	-----------------------------	---

RNAV (GPS) RWY 7  
VIDALIA RGNL (VDI)

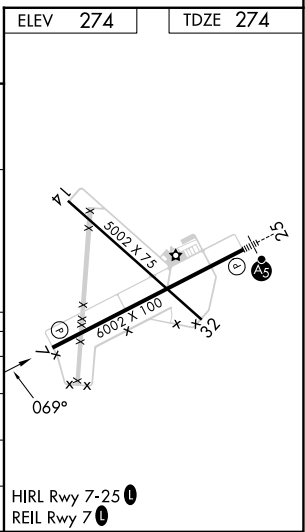
**⚠** For uncompensated Baro-VNAV systems, LNAV/VNAV NA below -15°C (5°F) or above 54°C (130°F). DME/DME RNP-0.3 NA. When local altimeter setting not received, use Baxley altimeter setting and increase all DA 77 feet and all MDA 80 feet, increase LPV and LNAV/VNAV all Cnts visibility ¼ mile, LNAV and Circling Cnts C/D visibility ¼ mile. VDP and Baro-VNAV NA when using Baxley altimeter setting. Night Landing: Rwy 32 NA. Helicopter visibility reduction below ¾ SM NA.

**MISSED APPROACH:**  
Climb to 2000 direct COBTA and hold.

AWOS-3 <b>119.925</b>	JACKSONVILLE CENTER <b>127.575 269.025</b>	UNICOM <b>122.8 (CTAF) ①</b>
--------------------------	---	---------------------------------



VGSi and RNAV descent angles not coincident (VGSi Angle 3.00/TCH 41).				2000	COBTA
4 NM Holding Pattern				FEVKO	DIOLS
2000 ← 249° 069° →				2000	GRUBS 2.3 NM to RW07
GP 3.00° TCH 60				1060	*1 NM to RW07
				8 NM	2.9 NM
				1.3 NM	1 NM
				*LNAV only.	
CATEGORY	A	B	C	D	
LPV DA		524-¾	250 (300-¾)		
LNAV/ VNAV DA		527-¾	253 (300-¾)		
LNAV MDA		620-1	346 (400-1)		
CIRCLING	740-1	466 (500-1)	920-1¾ 646 (700-1¾)	1060-2½ 786 (800-2½)	



SE-4, 07 AUG 2025 to 04 SEP 2025

SE-4, 07 AUG 2025 to 04 SEP 2025