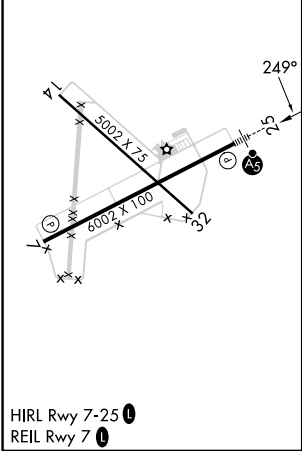
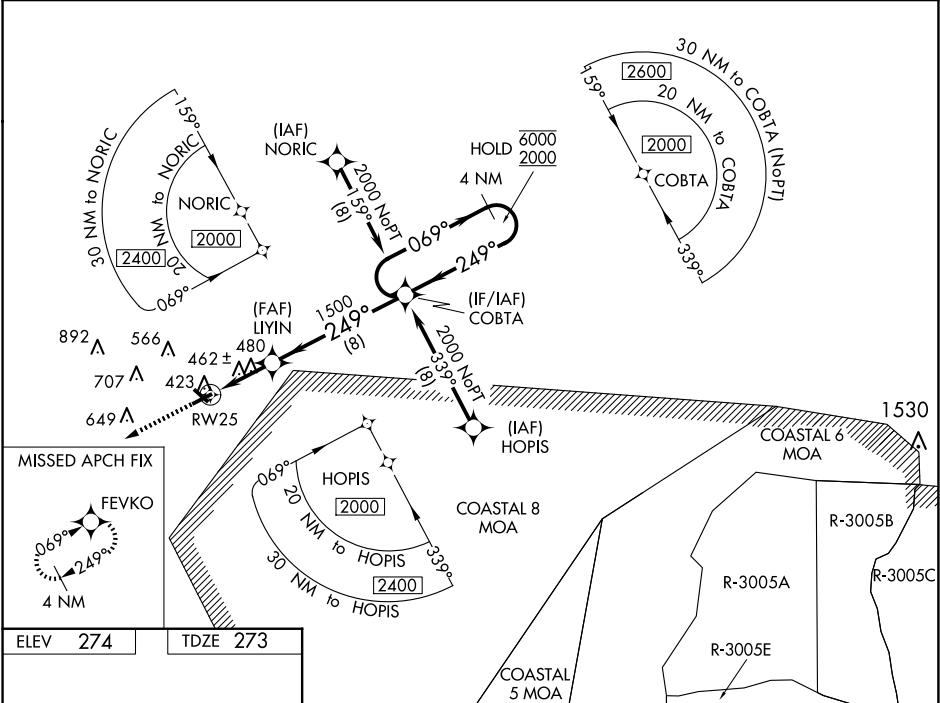


WAAS CH 69609 W25A	APP CRS 249°	Rwy Ldg TDZE Apt Elev	6002 273 274
--	------------------------	-----------------------------	---

RNAV (GPS) RWY 25
VIDALIA RGNL (VDI)

RNP APCH - GPS.	MALSR	MISSED APPROACH: Climb to 2000 direct FEVKO and hold.
<div><div></div><div></div></div> <div>Circling Rwy 32 NA at night. For uncompensated Baro-VNAV systems, LNAV/VNAV NA below -15°C or above 54°C. For inop ALS, increase LNAV/VNAV all Cats visibility to ¾ SM and LNAV Cat C/D to 1 ¾ SM.</div>	<div><div></div><div></div></div>	

AWOS-3 119.925	JACKSONVILLE CENTER 127.575 269.025	UNICOM 122.8 (CTAF) 0
--------------------------	---	---------------------------------



2000 ↑	FEVKO ✦	VGSI and RNAV glidepath not coincident (VGSI Angle 3.00/TCH 48).			4 NM Holding Pattern
		LIYIN 1500		COBTA	
RW25 1.3 NM to RW25		249°		069° → 6000 ← 249° 2000	
		1500		GP 3.00° TCH 44	
1.3		2.4 NM		8 NM	
CATEGORY	A		B	C	D
LPV DA			473-½	200 (200-½)	
LNAV/ VNAV DA			584-½	311 (400-½)	
LNAV MDA	740-½ 467 (500-½)		740-1 467 (500-1)		
CIRCLING	740-1 466 (500-1)		920-1¾ 646 (700-1¾)	1060-2½ 786 (800-2½)	