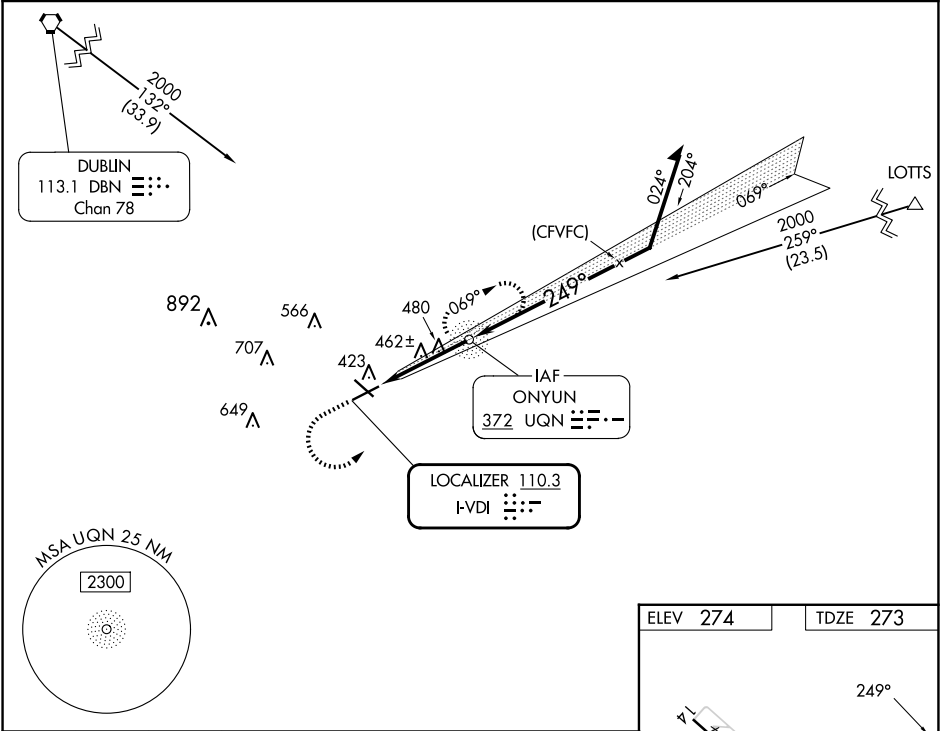


LOC I-VDI	APP CRS	Rwy Ldg	6002
110.3	249°	TDZE	273
		Apt Elev	274

ILS or LOC RWY 25

VIDALIA RGNL (VDI)

ADF required.			MALSR	MISSED APPROACH: Climb to 1100 then climbing left turn to 2000 direct UQN NDB and hold.
When local altimeter setting not received, use Baxley altimeter setting and increase all DAs 77 feet and all MDAs 80 feet, increase S-LOC 25 Cat C/D visibility ¼ mile, Circling Cat C/D visibility ¼ mile. For inop MALSR, increase S-LOC 25 Cat C/D visibility to 1¾ mile. For inop MALSR, when using Baxley altimeter setting increase S-ILS 25 all Cats visibility to ¾ mile. Night landing Rwy 32 NA.				
AWOS-3	JACKSONVILLE CENTER	UNICOM		
119.925	127.575 269.025	122.8 (CTAF)		



1100	2000	UQN	UQN NDB	Remain within 10 NM
			1491	
VGSI and ILS glidepath not coincident (VGSI Angle 3.00/TCH 48).				
CATEGORY	A	B	C	D
S-ILS 25	473-1½ 200 (200-1½)			
S-LOC 25	740-1½	467 (500-1½)	740-1	467 (500-1)
CIRCLING	740-1	466 (500-1)	920-1¾ 646 (700-1¾)	1060-2½ 786 (800-2½)

ELEV 274	TDZE 273
HIRL Rwy 7-25	
REIL Rwy 7	
FAF to MAP 3.7 NM	
Knots	60 90 120 150 180
Min:Sec	3:42 2:28 1:51 1:29 1:14

SE-4, 07 AUG 2025 to 04 SEP 2025

SE-4, 07 AUG 2025 to 04 SEP 2025