

APP CRS  
269°

Rwy Ldg  
3180

TDZE  
9

Apt Elev  
9

RNAV (GPS) RWY 28R  
NORTH PERRY (HWO)

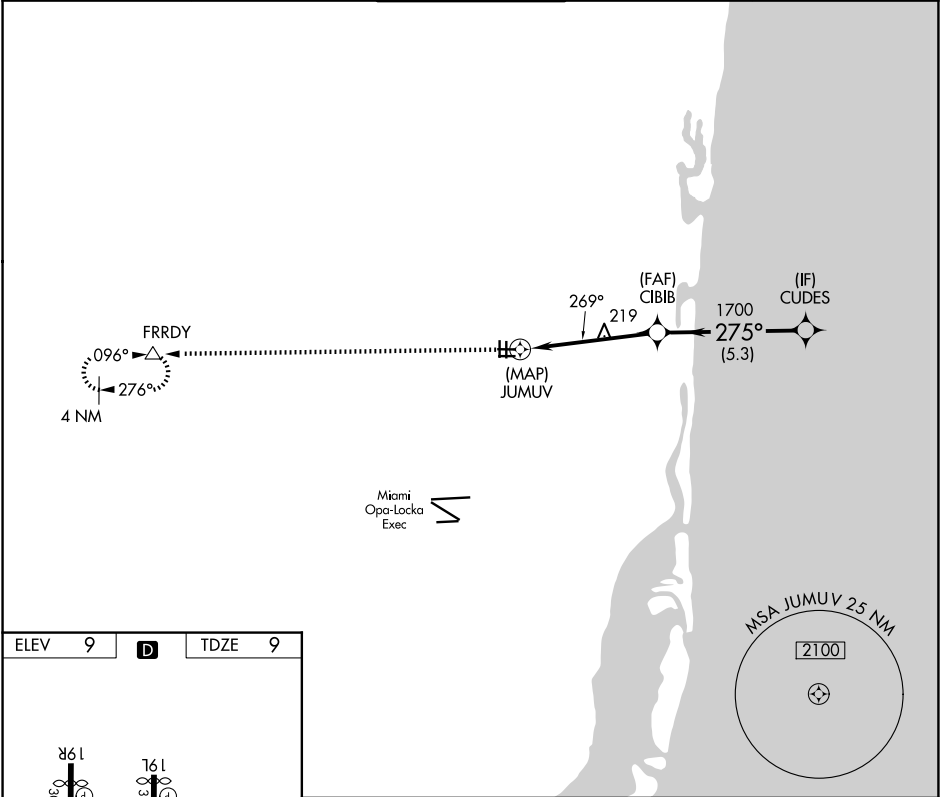
RNP APCH. RADAR required for procedure entry.

▼

Rwy 28R helicopter visibility reduction below ¾ SM NA. Straight-in minimums NA at night. Circling Rwy 1R, 10L, 19L, 28R NA at night. Circling NA for Cat C south of Rwy 10R-28L.

MISSED APPROACH:  
Climb to 2000 direct FRRDY and hold.

ATIS 135.475	MIAMI APP CON 128.6 306.975	NORTH PERRY TOWER* 132.1 (CTAF) 0 254.3	GND CON 120.45 254.3	UNICOM 122.95
-----------------	--------------------------------	--	-------------------------	------------------



ELEV 9 D TDZE 9

2000 FRRDY

VGSI and descent angles not coincident (VGSI Angle 3.50/TCH 39).

CUDES

JUMUV

CIBIB

1700

275°

269°

3.00° TCH 43

0.3 4.9 NM 5.3 NM

CATEGORY	A	B	C	D
LNAV MDA	520-1	511 (600-1)	520-1⅔ 511 (600-1⅔)	NA
CIRCLING	560-1	551 (600-1)	560-1½ 551 (600-1½)	NA

SE-3, 07 AUG 2025 to 04 SEP 2025

SE-3, 07 AUG 2025 to 04 SEP 2025