

WAAS CH 81927 W07A	APP CRS 073°	Rwy Idg TDZE 730 Apt Elev 730	4491
--	------------------------	---	-------------

RNAV (GPS) RWY 7

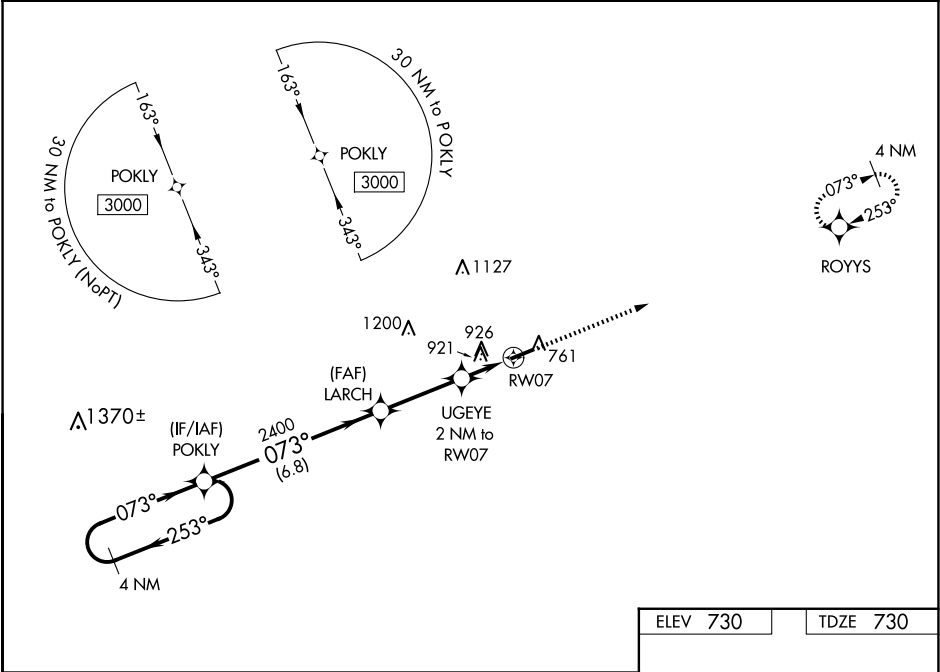
WILLIAMS COUNTY (ØG6)

▼
ΔNA

Baro-VNAV NA. When VGSI inop, Straight-in/Circling Rwy 7 procedure NA at night. DME/DME RNP-0.3 NA. Visibility reduction by helicopters NA. Use Defiance Meml altimeter setting; when not received, use De Kalb County altimeter setting; increase LPV DA to 1063 and all visibilities ¼ SM, LNAV/VNAV DA to 1300 and all visibilities ¼ SM; increase all MDAs 60 feet and LNAV and Circling visibility Cats C/D ¼ SM.

MISSED APPROACH:
Climb to 3000 direct ROYYS and hold.

DFI ASOS 121.425	TOLEDO APP CON 134.35 307.0	UNICOM 122.8 (CTAF)	123.0
----------------------------	---------------------------------------	-------------------------------	--------------



4 NM Holding Pattern POKLY

3000 ← 253°
073° →

GP 3.00°
TCH 35

POKLY

LARCH

2400

UGEYE
2 NM to RW07

2400

*1400

6.8 NM

3.1 NM

2 NM

RW07

3000 ROYYS

*LNAV only

CATEGORY	A	B	C	D
LPV DA	1003-1 273 (300-1)			
LNAV/ VNAV DA	1240-1 ³ / ₄ 510 (600-1 ³ / ₄)			
LNAV MDA	1260-1	530 (600-1)	1260-1 ¹ / ₂	530 (600-1 ¹ / ₂)
CIRCLING	1300-1	570 (600-1)	1300-1 ¹ / ₂ 570 (600-1 ¹ / ₂)	1520-2 ¹ / ₂ 790 (800-2 ¹ / ₂)

ELEV 730 TDZE 730

MRL Rwy 7-25
REIL Rwys 7 and 25

EC-2, 07 AUG 2025 to 04 SEP 2025

EC-2, 07 AUG 2025 to 04 SEP 2025