

WAAS CH 57925 W06A	APP CRS 059°	Rwy Idg 4201 TDZE 77 Apt Elev 81
--	------------------------	---

RNAV (GPS) RWY 6
BROOKHAVEN (HWV)

RNP APCH - GPS.

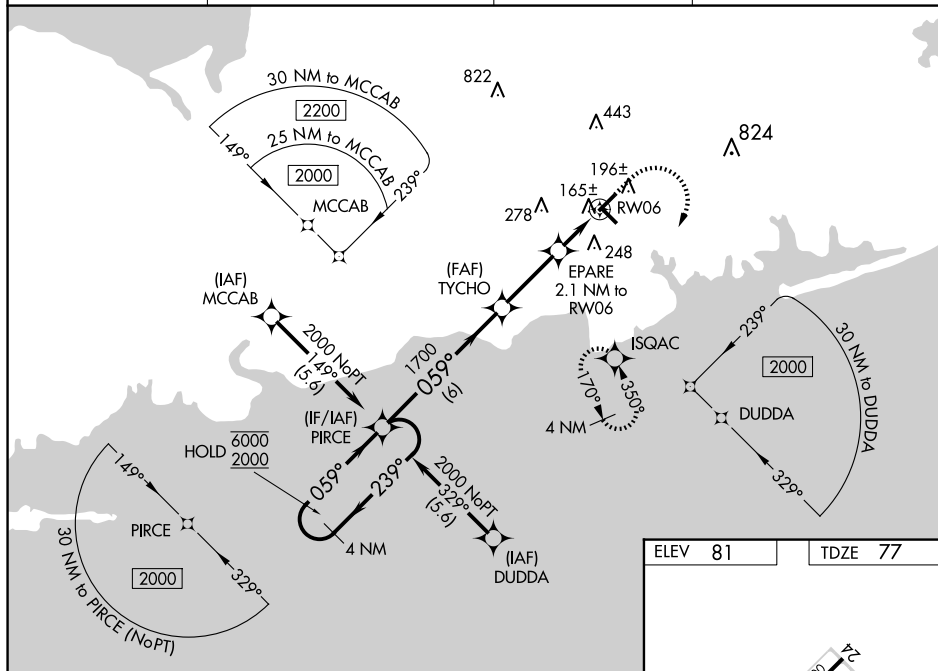
▼ For uncompensated Baro-VNAV systems, LNAV/VNAV NA below -15°C or above 54°C.
▲ Rwy 6 helicopter visibility reduction below 1 SM NA. Baro-VNAV and VDP NA when using ISF altimeter setting. When local altimeter setting not received, use ISF altimeter setting and increase LPV DA to 368 feet; increase LNAV/VNAV DA to 355 feet; increase all MDAs 40 feet. Inop table does not apply to LNAV/VNAV. For inop ALS, increase LPV all Cats visibility to ½ SM, increase LNAV all Cats visibility to 1 SM. For inop ALS when using ISF altimeter setting, increase LPV and LNAV/VNAV all Cats visibility to ½ SM, increase LNAV all Cats visibility to 1 SM. Circling Rwy 6, 15 NA at night.

MALSR



MISSED APPROACH:
Climb to 600 then
climbing right turn
to 2000 direct
JSQAC and hold.

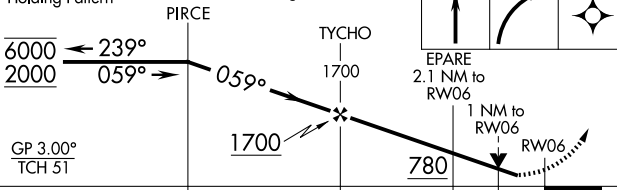
ASOS 119.625	NEW YORK APP CON 120.05 343.75	CLNC DEL 133.2	UNICOM 122.8 (CTAF) 0
------------------------	--	--------------------------	---------------------------------




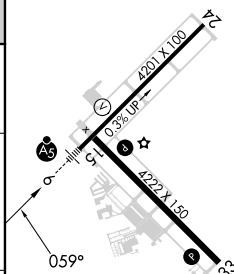
NE-2, 07 AUG 2025 to 04 SEP 2025

ELEV 81		TDZE 77
---------	--	---------

4 NM VGSI and RNAV glidepath not coincident
Holding Pattern (VGSI Angle 3.00/TCH 47).



CATEGORY		A	B	C	D
LPV	DA	340- ³ / ₄	263 (300- ³ / ₄)		NA
LNAV/ VNAV	DA	327- ³ / ₄	250 (300- ³ / ₄)		NA
LNAV	MDA	420- ³ / ₄	343 (400- ³ / ₄)		NA
 CIRCLING		560-1	479 (500-1)		NA



REIL Rwys 15, 24 and 33 **L**
MIRL Rwys 6-24 and 15-33 **L**