

WAAS CH 42613 W04A	APP CRS 043°	Rwy Idg TDZE 2288 Apt Elev 2302
----------------------------------------	------------------------	-----------------------------------------------------

RNAV (GPS) RWY 4

GREENBRIER VALLEY (LWB)

RNP APCH.

▼

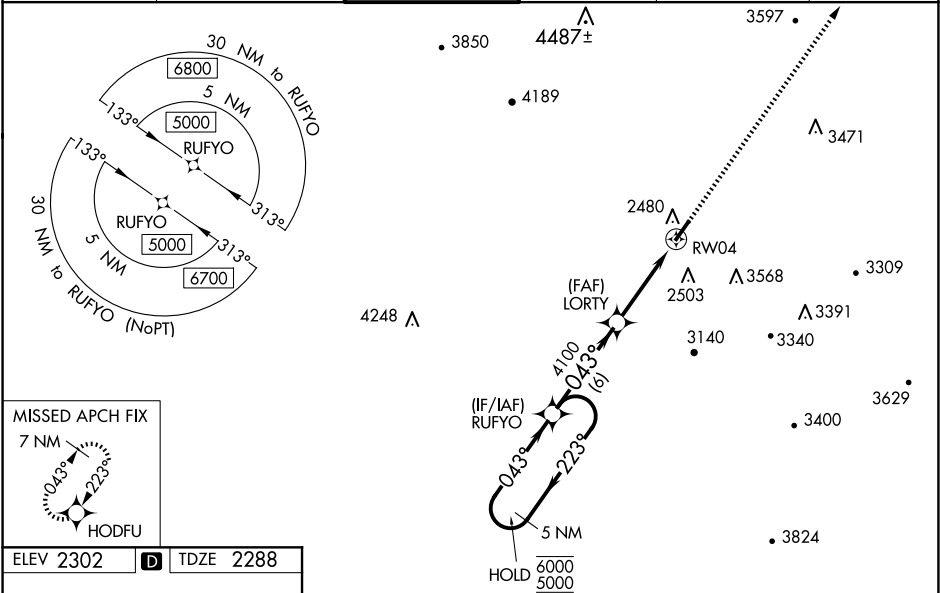
▲

Rwy 4 helicopter visibility reduction below ¾ NA.
For uncompensated Baro-VNAV systems, LNAV/VNAV NA below -19°C or above 54°C.
For inop ALS, increase LNAV Cats A/B visibilities to 1 SM, Cats C/D to 1 ½ SM, and increase LPV all Cats visibilities to ¾ SM.

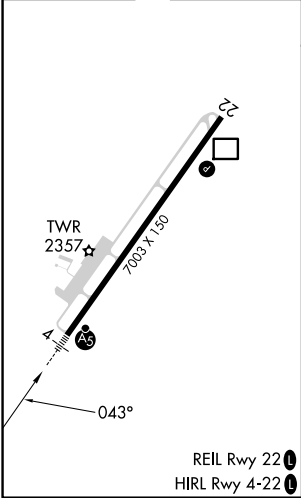
MALSR

MISSED APPROACH:
Climb to 6300 direct HODFU and hold, continue climb-in-hold to 6300.

ATIS 121.4	WASHINGTON CENTER 134.4 353.9	LEWISBURG TOWER* 118.9 (CTAF) 0	GND CON 121.9	CLNC DEL 125.725 (When twr closed)	UNICOM 122.95
----------------------	-----------------------------------------	-------------------------------------------	-------------------------	-------------------------------------------------	-------------------------



ELEV 2302	D	TDZE 2288
-----------	----------	-----------



5 NM Holding Pattern				6300	HODFU
				*LNAV only.	
GP 3.00° TCH 51				*1.3 NM to RW04	
CATEGORY	A	B	C	D	
LPV DA		2559-¾	271 (300-¾)		
LNAV/VNAV DA		2738-⅞	450 (500-⅞)		
LNAV MDA	2760-¾	472 (500-¾)	2760-1	472 (500-1)	
	2840-1	3040-1	3280-3	3680-3	
	538 (600-1)	738 (800-1)	978 (1000-3)	1378 (1400-3)	