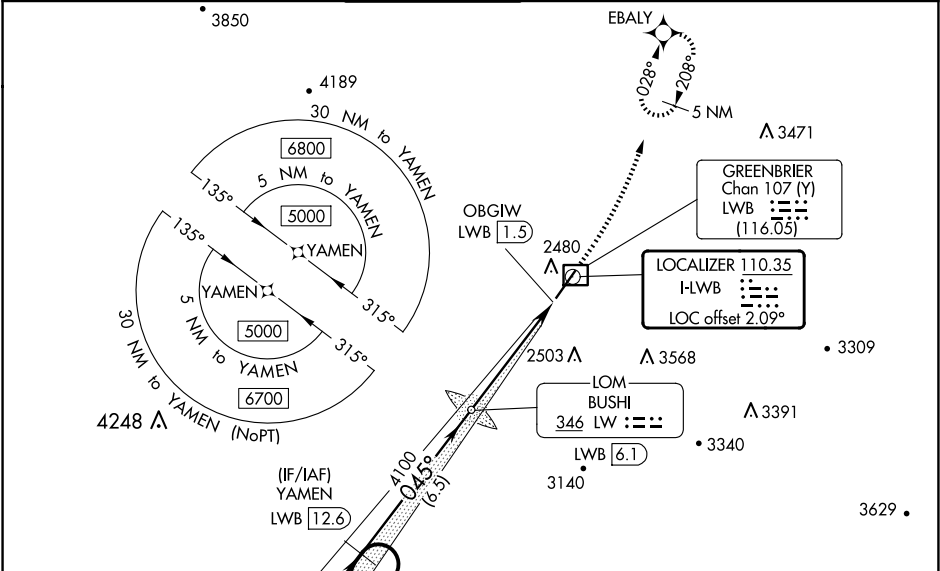


LOC I-LWB 110.35	APP CRS 045°	Rwy Idg TDZE Apt Elev 7003 2288 2302	ILS or LOC RWY 4 GREENBRIER VALLEY (LWB)	
----------------------------	------------------------	--	---	--

RNAV 1-GPS required. ADF or DME required for LOC only.			MALSR 	MISSED APPROACH: Climb to 4000 then climbing left turn to 6000 direct EBALY and hold, continue climb-in-hold to 6000.
Autopilot coupled approach NA below 2700. Rwy 4 helicopter visibility reduction below 3/4 SM NA. For inop ALS increase S-ILS 4 all Cats visibility to 7/8 SM, increase S-LOC 4 Cats A/B to 1 1/8 SM.				

ATIS 121.4	WASHINGTON CENTER 134.4 353.9	LEWISBURG TOWER* 118.9 (CTAF) 0	GND CON 121.9	CLNC DEL 125.725 (When twr closed)	UNICOM 122.95
----------------------	---	---	-------------------------	---	-------------------------



<p>5 NM Holding Pattern YAMEN LWB 12.6</p> <p>BUSHI LOM LWB 6.1</p> <p>GS 3.00° TCH 51</p> <p>4100</p> <p>3996</p> <p>4000 6000 EBALY</p> <p>*LWB 2.3 *LOC only.</p> <p>OBGIW LWB 1.5</p> <p>0.8 NM 0.4</p> <p>6.5 NM 3.8 NM</p>					<p>5 NM Holding Pattern YAMEN LWB 12.6</p> <p>BUSHI LOM LWB 6.1</p> <p>GS 3.00° TCH 51</p> <p>4100</p> <p>3996</p> <p>4000 6000 EBALY</p> <p>*LWB 2.3 *LOC only.</p> <p>OBGIW LWB 1.5</p> <p>0.8 NM 0.4</p> <p>6.5 NM 3.8 NM</p>					<p>5 NM Holding Pattern YAMEN LWB 12.6</p> <p>BUSHI LOM LWB 6.1</p> <p>GS 3.00° TCH 51</p> <p>4100</p> <p>3996</p> <p>4000 6000 EBALY</p> <p>*LWB 2.3 *LOC only.</p> <p>OBGIW LWB 1.5</p> <p>0.8 NM 0.4</p> <p>6.5 NM 3.8 NM</p>																			
CATEGORY					A					B					C					D									
S-ILS 4					2559-3/4					271 (300-3/4)																			
S-LOC 4					2720-3/4					432 (500-3/4)																			
CIRCLING					2840-1 538 (600-1)					3040-1 738 (800-1)					3280-3 978 (1000-3)					3680-3 1378 (1400-3)									
FAF to MAP 4.6 NM																													
REIL Rwy 22 HIRL Rwy 4-22																													
Knots					60					90					120					150					180				
Min:Sec					4:36					3:04					2:18					1:50					1:32				