

WAAS CH <b>70704</b> <b>W32A</b>	APP CRS <b>318°</b>	Rwy Idg <b>5425</b> TDZE <b>20</b> Apt Elev <b>20</b>
--	------------------------	---

## RNAV (GPS) RWY 32

APALACHICOLA RGNL-CLEVE RANDOLPH FLD (AAF)

RNP APCH - GPS.

**T** Rwy 32 helicopter visibility reduction below 1 SM NA. Baro-VNAV NA when using Northwest Florida Beaches Intl altimeter setting. For uncompensated Baro-VNAV systems, LNAV/VNAV NA below -15°C or above 54°C. Straight-in Rwy 32 NA at night, Circling Rwy 6, 18, 24, 32 NA at night. When local altimeter setting not received, use Northwest Florida Beaches Intl altimeter setting and increase LPV DA to 480 feet and all visibilities  $\frac{3}{4}$  SM. Increase LNAV/VNAV DA to 527 feet and all visibilities  $\frac{3}{4}$  SM. Increase all MDAs 140 feet and LNAV visibility Cat C/D  $\frac{3}{4}$  SM, and Circling visibility Cat C/D  $\frac{1}{2}$  SM.

**MISSED APPROACH:**  
Climb to 3000 direct  
ASVOY and hold,  
continue climb-in-hold  
to 3000.

ASOS  
119.925

TYNDALL APP CON ★  
124.15

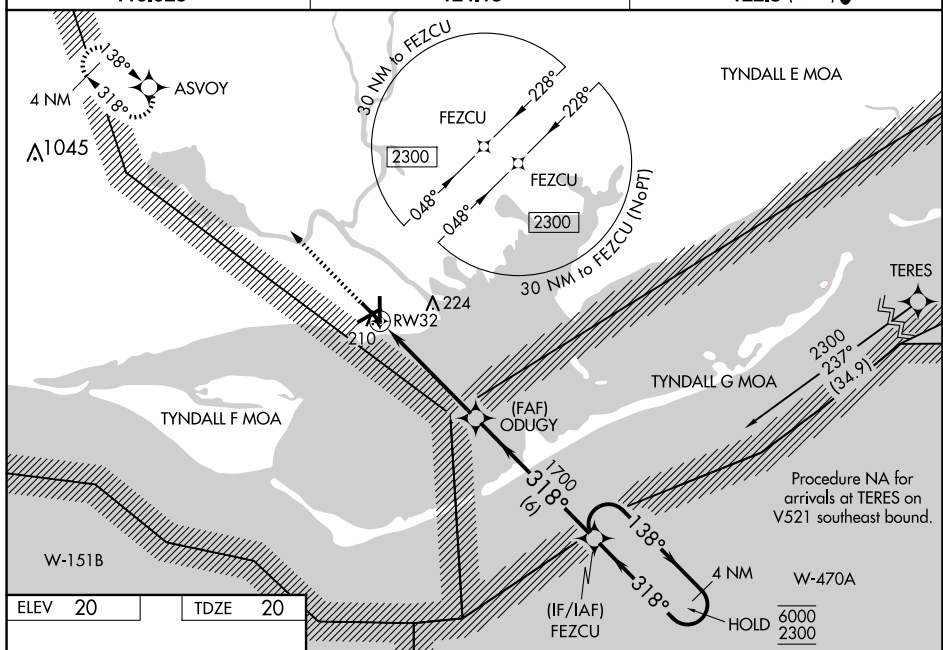
UNICOM  
122.8 (CTAF) **L**

Diagram illustrating a 3D coordinate system with axes labeled 1, 2, and 3. The axes are defined by lines with arrows. A point is marked with a star at coordinates (150, 150, 36). Dimensions are given for segments: 5271 x 150 along axis 1, 5425 x 150 along axis 2, and 5271 x 150 along axis 3. A 318° angle is indicated between axes 2 and 3.

VGSJ and RNAV glidepath not coincident (VGSJ Angle 3.00/TCH 66).

4 NM Holding Pattern

FEZCU

138° → 6000  
← 318° 2300

ODUGY 1700

318°

1700

RW32

4.8 NM

6 NM

GP 3.19°  
TCH 40

CATEGORY	A	B	C	D
LPV DA	349-1 $\frac{1}{8}$	329 (400-1 $\frac{1}{8}$ )		
RNAV/ VNAV	DA	396-1	376 (400-1)	
RNAV MDA	460-1	440 (500-1)	460-1 $\frac{1}{4}$	440 (500-1 $\frac{1}{4}$ )
<b>C</b> CIRCLING	520-1	500 (500-1)	680-1 $\frac{3}{4}$ 660 (700-1 $\frac{3}{4}$ )	680-2 660 (700-2)