

RNP APCH - GPS.

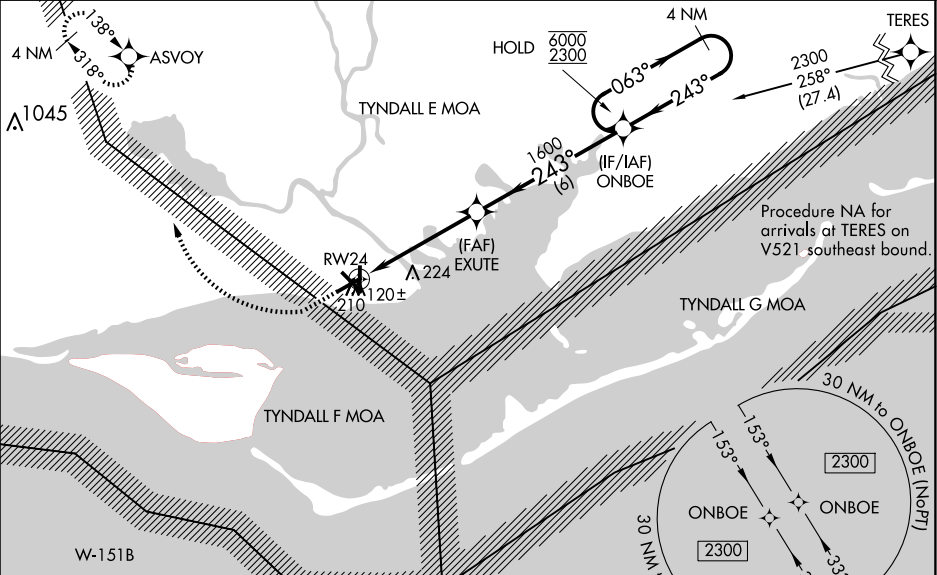
▼

⚠

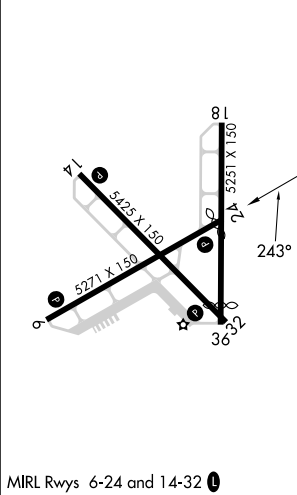
Rwy 24 helicopter visibility reduction below 1 SM NA. Straight-in Rwy 24 NA at night, Circling Rwy 6, 18, 24, 32 NA at night. When local altimeter setting not received, use Northwest Florida Beaches Intl altimeter setting and increase all MDAs 140 feet and LNAV visibility Cat C/D $\frac{3}{4}$ SM, and Circling visibility Cat C/D $\frac{1}{2}$ SM.

MISSED APPROACH: Climb to 600 then climbing right turn to 3000 direct ASVOY and hold, continue climb-in-hold to 3000.

ASOS 119.925	TYNDALL APP CON ★ 124.15	UNICOM 122.8 (CTAF) ①
-----------------	-----------------------------	--------------------------



ELEV 20	TDZE 20
---------	---------



600	3000	ASVOY	4 NM	ONBOE Holding Pattern
↑	↻	✧	ONBOE	063° → 6000 ← 243° 2300
EXUTE	243°	1600	4.8 NM	6 NM
RWY24	3.00°	TCH 40		
CATEGORY	A	B	C	D
LNAV MDA	500-1	480 (500-1)	500-1 $\frac{3}{4}$	480 (500-1 $\frac{3}{4}$)
CIRCLING	520-1	500 (500-1)	680-1 $\frac{3}{4}$ 660 (700-1 $\frac{3}{4}$)	680-2 660 (700-2)