

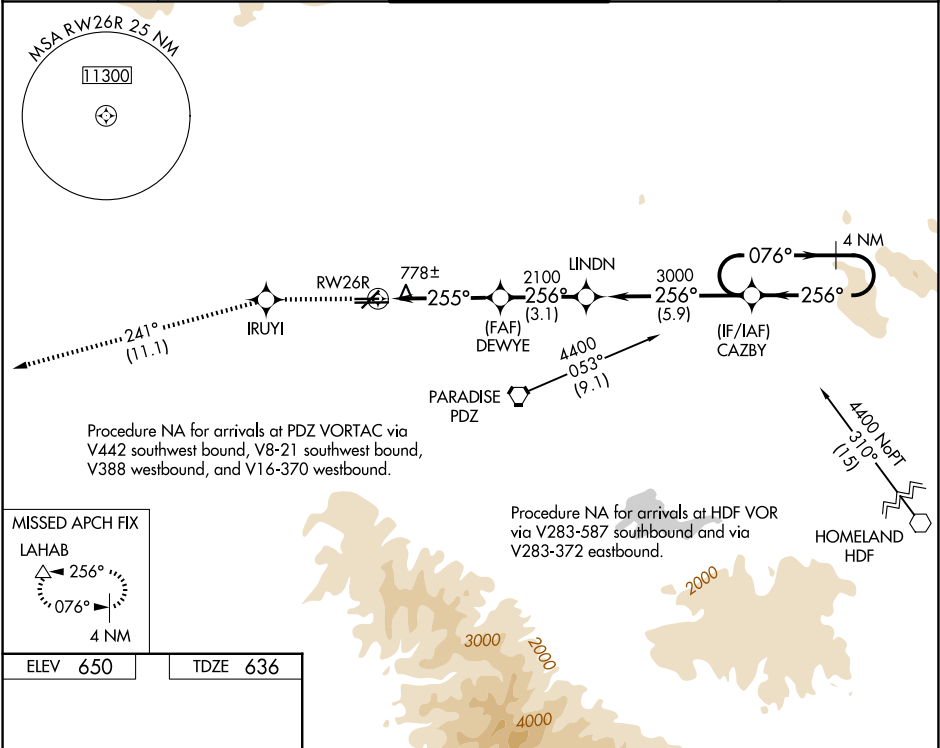
WAAS CH 97320 W26A	APP CRS 255°	Rwy Ldg TDZE Apt Elev	4858 636 650
--	------------------------	-----------------------------	---

RNAV (GPS) RWY 26R

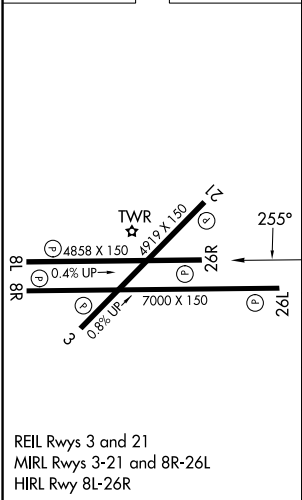
CHINO (CNO)

RNP APCH-GPS.	MISSED APPROACH: Climb to 4000 direct IRUYI and via 241° track to LAHAB and hold.
For uncompensated Baro-VNAV systems, LNAV/VNAV NA below -16°C or above 54°C. Helicopter visibility reduction below ¾ SM NA.	

D-ATIS 125.85	SOCAL APP CON 135.4 377.125	CHINO TOWER ★ 118.5 (CTAF)	GND CON 121.6	UNICOM 122.95
-------------------------	---------------------------------------	--------------------------------------	-------------------------	-------------------------



ELEV 650	TDZE 636
----------	----------



4000	IRUYI	LAHAB	CAZBY	4 NM Holding Pattern
	tr 241°			
*LNAV only.		DEWYE	LINDN	
	*1.8 NM to RW26R			
		2100	3000	
		255°	256°	
			076°	4400
			256°	
				GP 3.00° TCH 51
	1.8	2.6 NM	3.1 NM	5.9 NM
CATEGORY	A	B	C	D
LPV DA	1030-1¼ 394 (400-1¼)			
LNAV/VNAV DA	1177-2 541 (600-2)			
LNAV MDA	1260-1	624 (700-1)	1260-1¾ 624 (700-1¾)	1260-2 624 (700-2)
CIRCLING	1260-1¾	610 (700-1¾)	1340-2¼ 690 (700-2¼)	