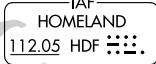
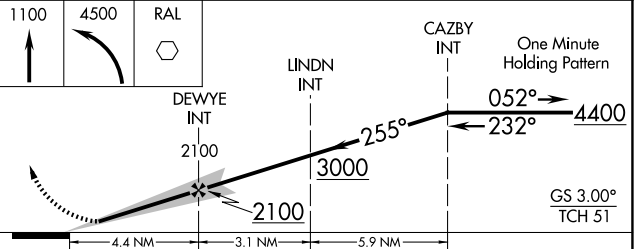


ILS or LOC RWY 26R
CHINO (CNO)

- MISSED APPROACH:** Climb to 1100 then climbing left turn to 4500 direct RAL VOR and hold, continue climb-in-hold to 4500.

UNICOM
122.95TDZE 636

CATEGORY	A	B	C	D
S-ILS 26R	886-3/4 250 (300-3/4)			
S-LOC 26R	1060-1	424 (500-1)	1060-1 1/4	424 (500-1 1/4)
CIRCLING	1180-1 530 (600-1)	1200-1 550 (600-1)	1240-1 1/2 590 (600-1 1/2)	1340-2 1/4 690 (700-2 1/4)

SW-3, 07 AUG 2025 to 04 SEP 2025