

MELFA, VIRGINIA

AL-5598 (FAA)

24361

LOC/DME I-MFV 110.15 Chan 38 (Y)	APP CRS 034°	Rwy ldg TDZE 47 Apt Elev 48
--	------------------------	---

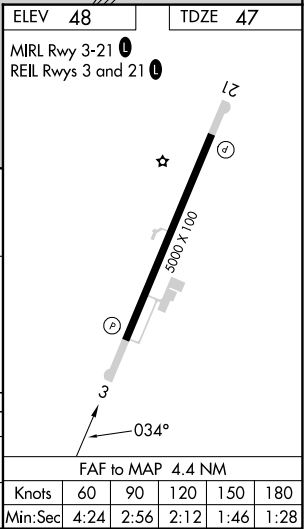
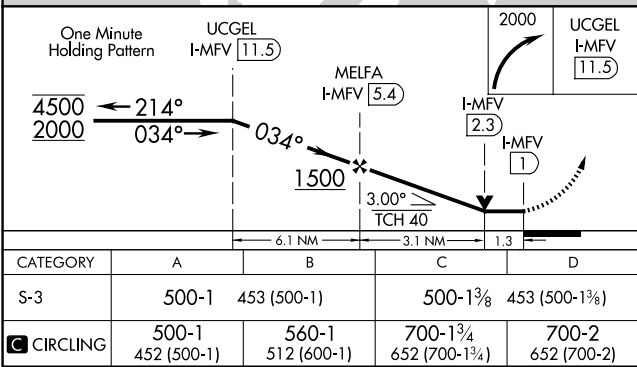
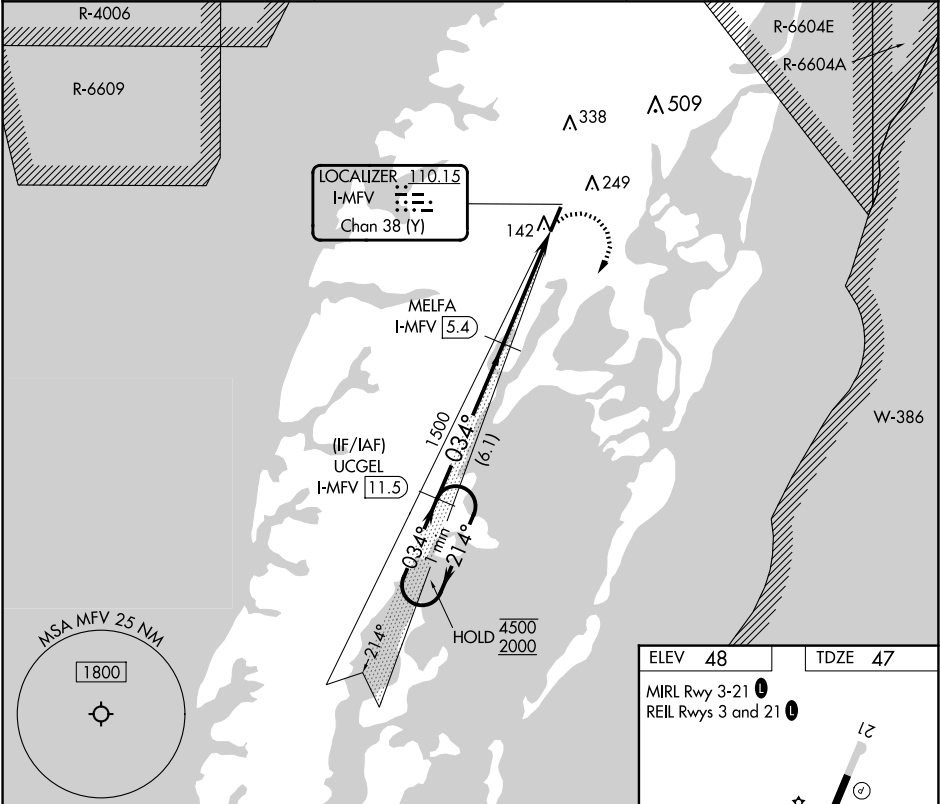
LOC RWY 3
ACCOMACK COUNTY (MFV)

RNP APCH - GPS.

Rwy 3 helicopter visibility reduction below ¾ SM NA.

MISSED APPROACH: Climbing right turn to 2000 direct UCGEL and hold.

AWOS-3 118.175	PATUXENT APP CON ★ 127.95 314.0	UNICOM 122.8 (CTAF) 0
--------------------------	---	--



MELFA, VIRGINIA
Amdt 2 26DEC24

37°39'N-75°46'W

ACCOMACK COUNTY (MFV)
LOC RWY 3

NE-3, 07 AUG 2025 to 04 SEP 2025

NE-3, 07 AUG 2025 to 04 SEP 2025