

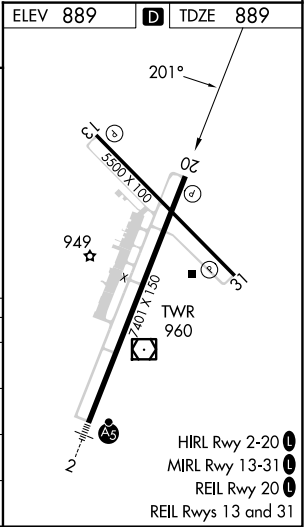
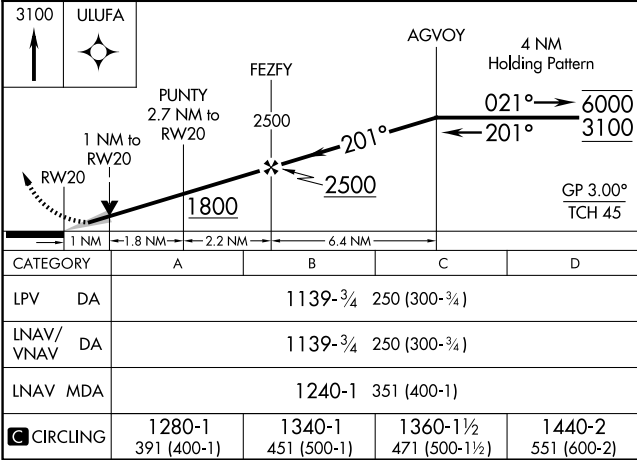
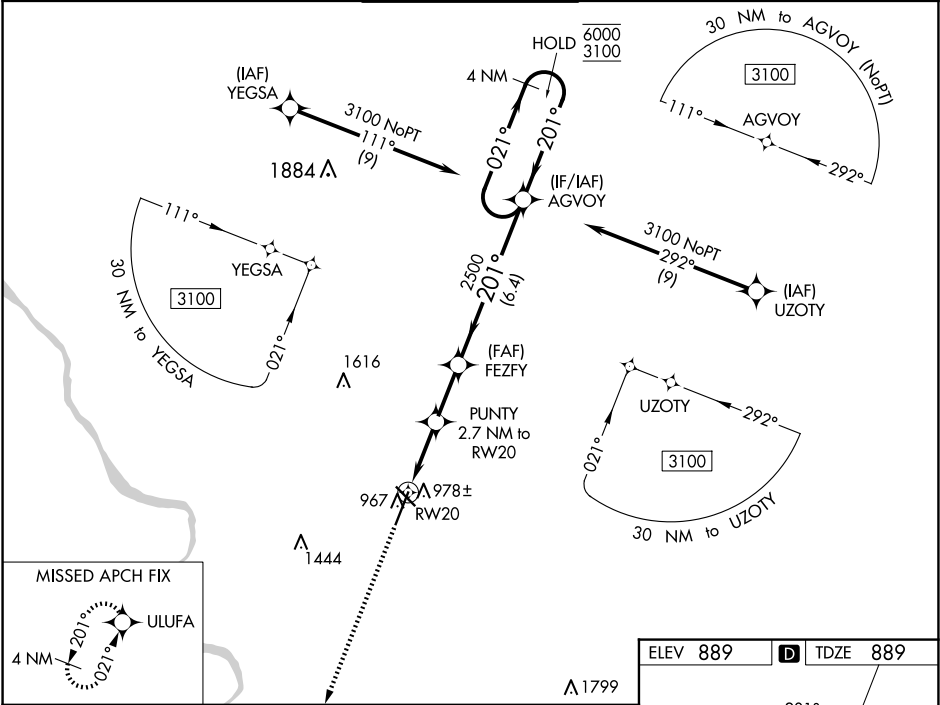
WAAS CH <b>93599</b> <b>W20A</b>	APP CRS <b>201°</b>	Rwy Idg TDZE Apt Elev	<b>7401</b> <b>889</b> <b>889</b>
--	------------------------	-----------------------------	---

RNAV (GPS) RWY 20

COLUMBIA RGNL (COU)

RNP APCH - GPS.	MISSED APPROACH: Climb to 3100 direct ULUFA and hold.
Circling NA for Cat D west of Rwy 2 and 13. For uncompensated Baro-VNAV systems, LNAV/VNAV NA below -16°C or above 54°C.	

ATIS <b>128.45</b>	MIZZU APP CON <b>124.375 353.925</b>	COLUMBIA TOWER ★ <b>119.3 (CTAF) 363.25</b>	GND CON <b>121.6</b>	UNICOM <b>122.95</b>
-----------------------	---	--	-------------------------	-------------------------



NC-3, 07 AUG 2025 to 04 SEP 2025

NC-3, 07 AUG 2025 to 04 SEP 2025