

VOR/DME PVD	APP CRS	Rwy Ldg	2623
115.6	164°	TDZE	162
Chan 103		Apt Elev	172

VOR/DME RWY 16

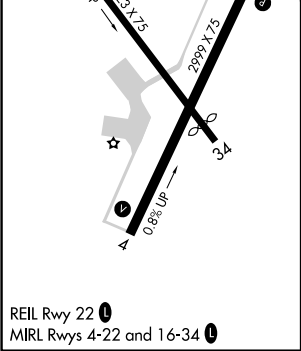
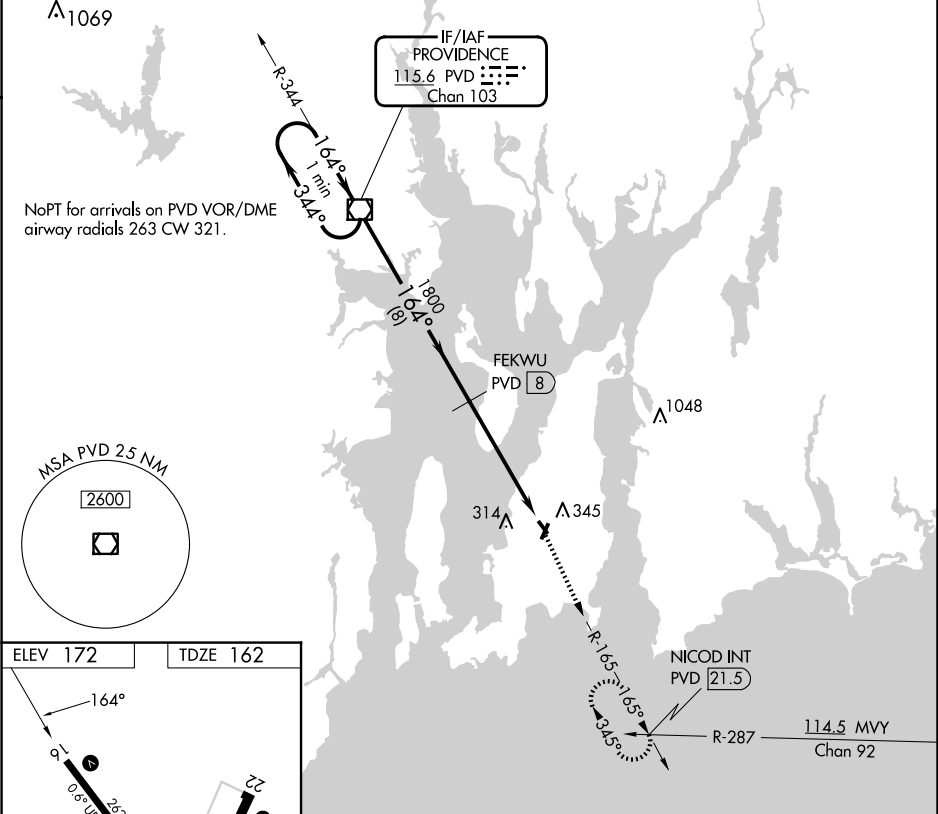
NEWPORT STATE (UUU)

⚠

When local altimeter setting not received, use Providence altimeter setting and increase all MDA 60 feet; increase S-16 Cat C visibility ¼ mile. Circling Rwy 4, 22, 34 NA at night. Rwy 16 helicopter visibility reduction below ¾ SM NA.

MISSED APPROACH: Climb to 2100 via PVD R-165 to NICOD INT/21.5 DME and hold.

ASOS 132.075	PROVIDENCE APP CON★ 128.7 269.525	CLNC DEL 127.25	UNICOM 123.05 (CTAF) 📻
-----------------	--------------------------------------	--------------------	---------------------------



One Minute Holding Pattern		PVD VOR/DME		2100 PVD R-165		NICOD INT	
3000		←344° 164°→		164°		3.04° TCH 40	
VGSI and descent angles not coincident (VGSI Angle 3.75/TCH 40).		1800		FEKWU PVD (8)		PVD (13)	
		8 NM		5 NM			
CATEGORY	A	B	C	D			
S-16	680-1	518 (600-1)	680-1½ 518 (600-1½)	NA			
CIRCLING	700-1 528 (600-1)	760-1 588 (600-1)	780-1¾ 608 (700-1¾)	NA			

NE-1, 07 AUG 2025 to 04 SEP 2025

NE-1, 07 AUG 2025 to 04 SEP 2025