

APP CRS
166°

Rwy Ldg
2623
TDZE
162
Apt Elev
172

RNAV (GPS) RWY 16

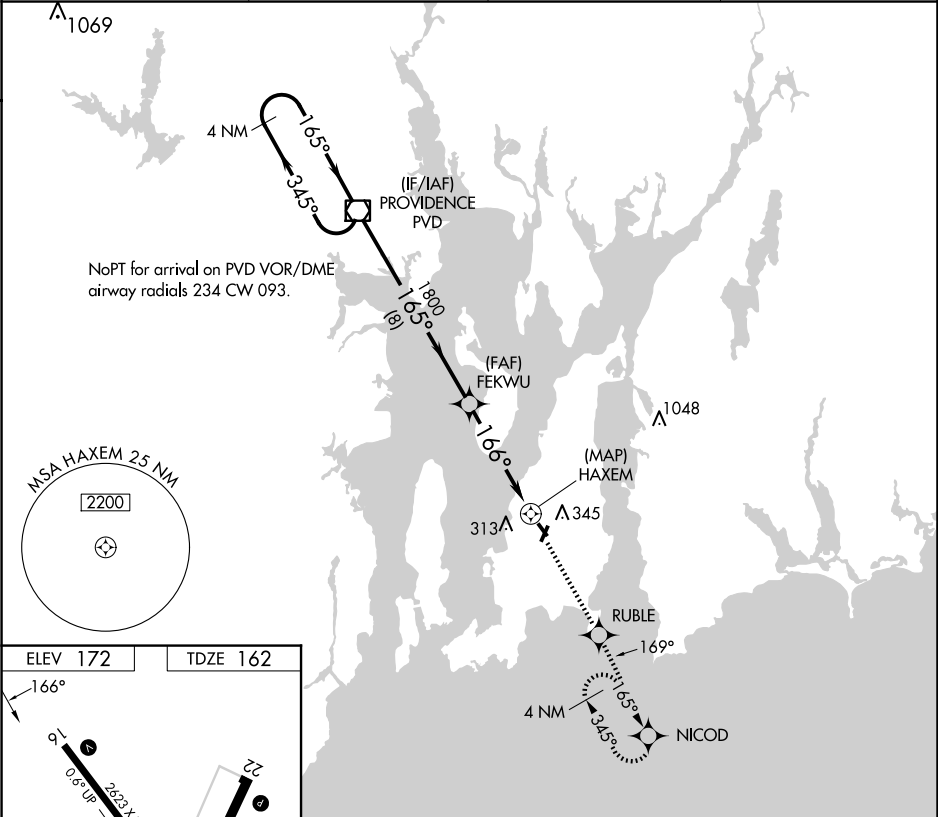
NEWPORT STATE (UUU)

RNP APCH

When local altimeter setting not received, use Providence altimeter setting and increase all MDAs 60 feet. Circling Rwy 4, 22, 34 NA at night.
Rwy 16 helicopter visibility reduction below 3/4 SM NA.

MISSED APPROACH: Climb to 2100 direct RUBLE and via 169° track to NICOD and hold.

ASOS 132.075	PROVIDENCE APP CON* 128.7 269.525	CLNC DEL 127.25	UNICOM 123.05 (CTAF) 0
-----------------	--------------------------------------	--------------------	---------------------------



ELEV 172

TDZE 162

3000

345°

165°

165°

1800

166°

FEKWU

3.04°

TCH 40

HAXEM

8 NM

4.5 NM

0.5

4 NM Holding Pattern

PVD VOR/DME

2100

RUBLE

tr 169°

NICOD

VGSI and descent angles not coincident (VGSI Angle 3.75/TCH 40).

CATEGORY	A	B	C	D
LNAV MDA	600-1	438 (500-1)	600-1 1/4 438 (500-1 1/4)	NA
CIRCLING	700-1 528 (600-1)	760-1 588 (600-1)	780-1 3/4 608 (700-1 3/4)	NA