

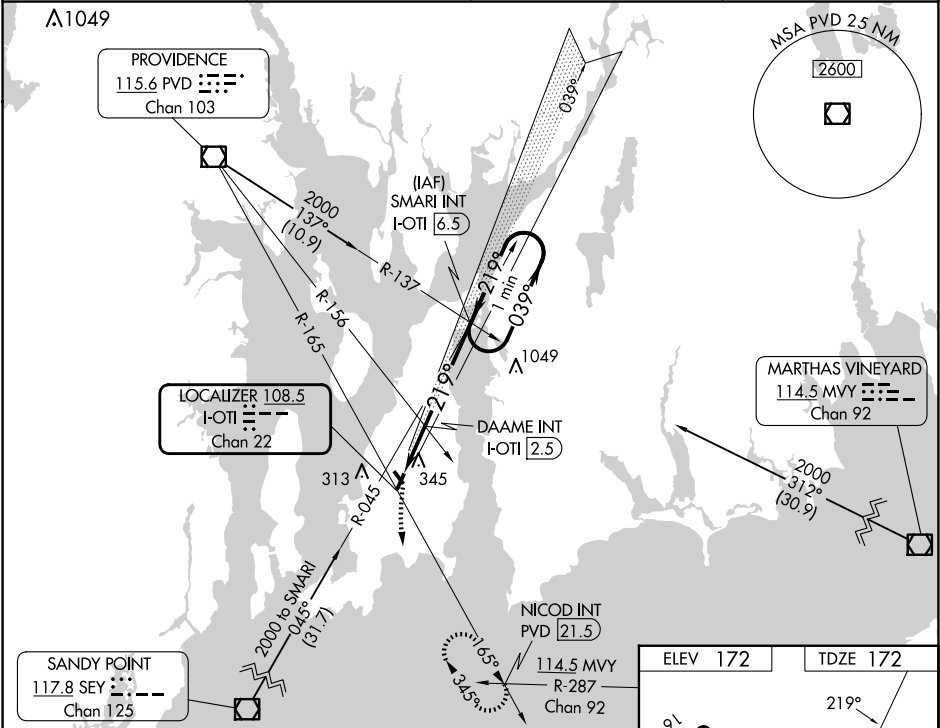
LOC/DME	I-OTI	APP CRS	Rwy Ldg	2999
108.5		219°	TDZE	172
Chan 22			Apt Elev	172

LOC RWY 22

NEWPORT STATE (UUU)

<div><div>NA</div><div>When local altimeter setting not received, use Providence altimeter setting and increase all MDA 60 feet. Straight-in Rwy 22 NA at night, Circling Rwy 4, 22, 34 NA at night.</div></div>	<div>MISSED APPROACH: Climbing left turn to 2100 via PVD VOR/DME R-165 to NICOD INT/21.5 DME and hold.</div>
--	--

ASOS 132.075	PROVIDENCE APP CON* 128.7 269.525	CLNC DEL 127.25	UNICOM 123.05 (CTAF) 0
-----------------	--------------------------------------	--------------------	---------------------------



2100 PVD R-165		NICOD INT	DAAME INT I-OTI 2.5	SMARI INT I-OTI 6.5	One Minute Holding Pattern
720*		219°	1800	039°	2000
1.9 NM		4 NM	*780 when using Providence altimeter setting.		
CATEGORY	A	B	C	D	
S-22	720-1	548 (600-1)	720-1 ⁵ / ₈ 548 (600-1 ⁵ / ₈)	NA	
CIRCLING	760-1	588 (600-1)	780-1 ³ / ₄ 608 (700-1 ³ / ₄)	NA	
DAAME FIX MINIMUMS (DUAL VOR RECEIVERS OR DME REQUIRED)					
S-22	640-1	468 (500-1)	640-1 ¹ / ₄ 468 (500-1 ¹ / ₄)	NA	
CIRCLING	760-1	588 (600-1)	780-1 ³ / ₄ 608 (700-1 ³ / ₄)	NA	

