

WAAS
CH **82216**
W13A

APP CRS
127°

Rwy Idg
TDZE **135**
Apt Elev **135**

RNAV (GPS) RWY 13L

REID-HILLVIEW OF SANTA CLARA COUNTY (RHW)

RNP APCH.

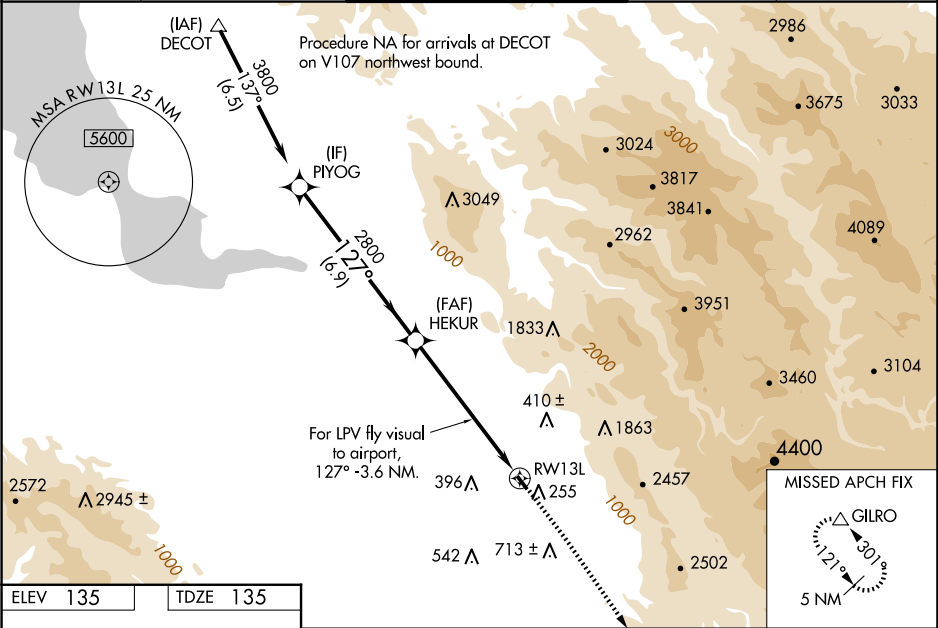
NA

NA

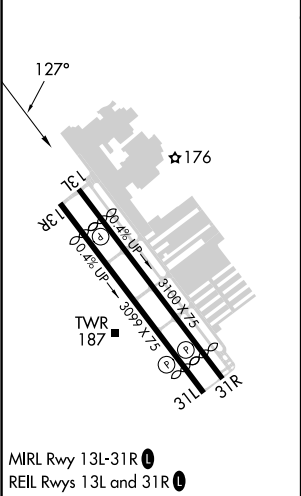
Circling Rwy 31L NA at night. Rwy 13L helicopter visibility reduction below ¾ SM NA. VDP NA with Norman Y Mineta San Jose Intl altimeter setting. When control tower closed, use Norman Y Mineta San Jose Intl altimeter setting and increase all DAs 25 feet and all MDAs 40 feet; increase LPV# visibility to 1¾ SM. Circling east of Rwy 13L-31R NA at night.

MISSED APPROACH: Climb to 1900 then climbing right turn to 5000 direct GILRO and hold.
#Missed approach requires minimum climb of 300 feet per NM to 2800.

ATIS 125.2	NORCAL APP CON 120.1 290.25	REID-HILLVIEW TOWER ★ (Rwy 13L-31R) (Rwy 13R-31L) 119.8 (CTAF) 0 126.1	GND CON 121.65	UNICOM 122.95
----------------------	---------------------------------------	---	--------------------------	-------------------------



ELEV 135	TDZE 135
----------	----------



PIYOG		HEKUR		* LNAV only.		1900	5000	GILRO
3800		2800		127°		↑	↗	△
GP 4.00°		2800		For LPV fly visual to RW13L, 127° -3.6 NM.		2 NM		
TCH 45		6.9 NM		4.2 NM		2 NM		
CATEGORY	A	B	C	D				
LPV DA#	562-1¼	427 (500-1¼)	NA					
LPV DA	1708-3	1573 (1600-3)	NA					
LNAV MDA#	1040-1¼	905 (1000-1¼)	NA					
LNAV MDA	1600-1¼ 1465 (1500-1¼)	1600-1½ 1465 (1500-1½)	NA					
CIRCLING	1600-1¼ 1465 (1500-1¼)	1600-1½ 1465 (1500-1½)	NA					