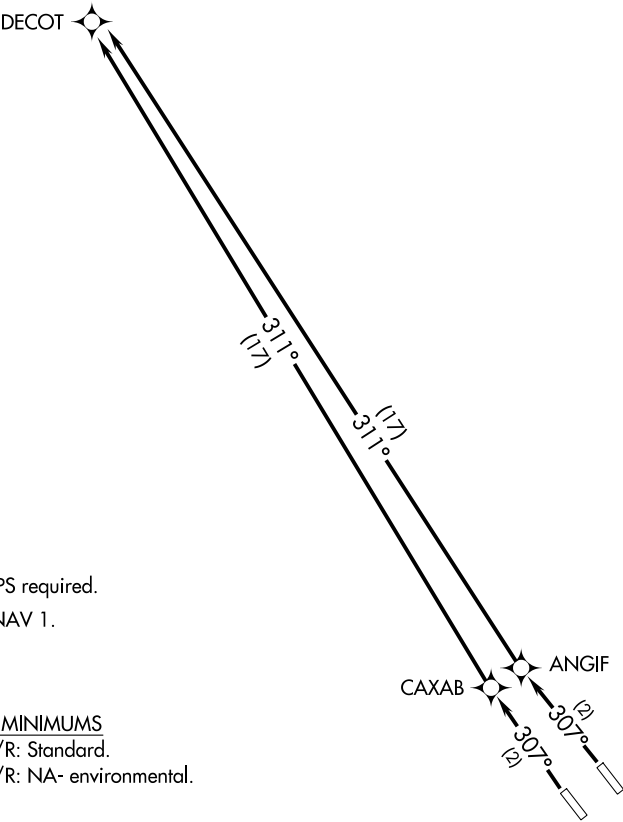


NORCAL DEP CON  
121.3 270.35



NOTE: GPS required.  
NOTE: RNAV 1.

TAKEOFF MINIMUMS  
Rwys 31L/R: Standard.  
Rwys 13L/R: NA- environmental.

TAKEOFF OBSTACLE NOTES  
Rwys 31L/R: Trees 1070' from DER, 500' right and left of centerline, 173' and 169' MSL.  
Rwy 31R: Light 125' from DER, 370' right of centerline, 159' MSL.

NOTE: Chart not to scale.

DEPARTURE ROUTE DESCRIPTION

- TAKEOFF RUNWAY 31L: Climb to 4000 via 307° course to CAXAB WP and 311° track to DECOT WP. Then via assigned route.
- TAKEOFF RUNWAY 31R: Climb to 4000 via 307° course to ANGIF WP and 311° track to DECOT WP. Then via assigned route.
- TAKEOFF RUNWAYS 13L/13R: NA.