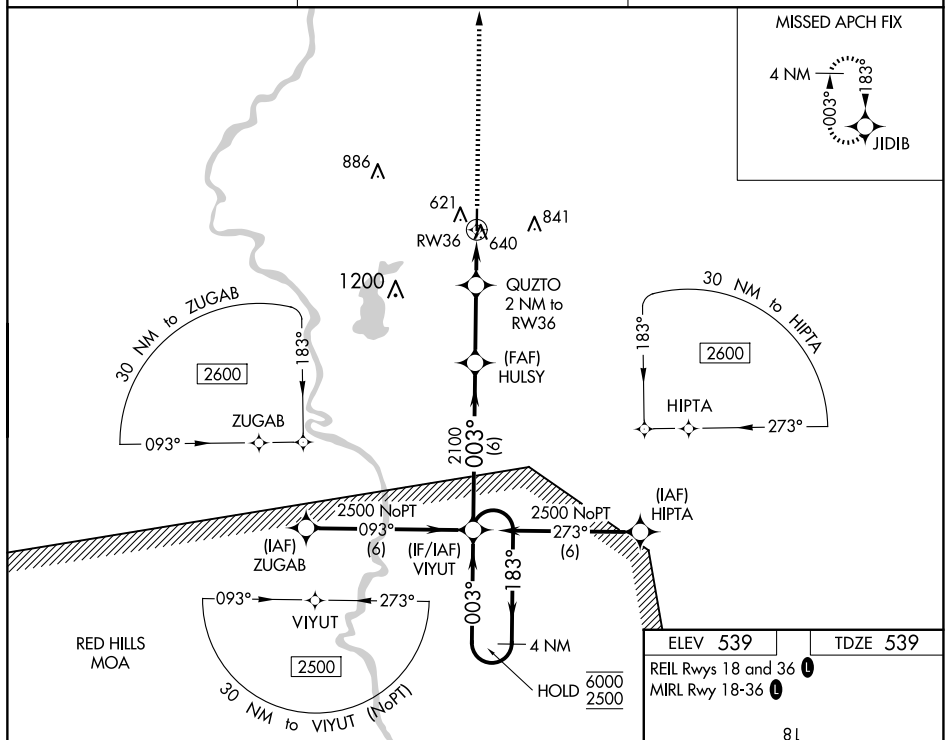


RNAV (GPS) RWY 36

SULLIVAN COUNTY (SIV)

MISSED APPROACH:
Climb to 2600 direct
JIDIB and hold.

UNICOM
122.8 (CTAF) 

4 NM Holding Pattern

VGSI and RNAV glidepath not coincident (VGSI Angle 3.00/TCH 40).

2600 JIDIB

*LNAV only

6000 183° 003° 003°

2500

GP 3.00° TCH 40

VIYUT


HULSY 2100

QUZTO 2 NM to RW36

*1200

6 NM 2.8 NM 2 NM

RW36

CATEGORY		A	B	C	D
LPV	DA	856-1½	317 (400-1½)		NA
INAV/ VNAV	DA	869-1	330 (400-1)		NA
INAV	MDA	980-1	441 (500-1)		NA
 CIRCLING		1000-1 461 (500-1)	1080-1 541 (600-1)		NA

