

WAAS CH <b>93536</b> <b>W09A</b>	APP CRS <b>094°</b>	Rwy Idg <b>4004</b> TDZE <b>38</b> Apt Elev <b>38</b>
--	------------------------	---

RNAV (GPS) RWY 9  
WALLACE-PENDER (ACZ)

	RNP APCH - GPS.
--	-----------------

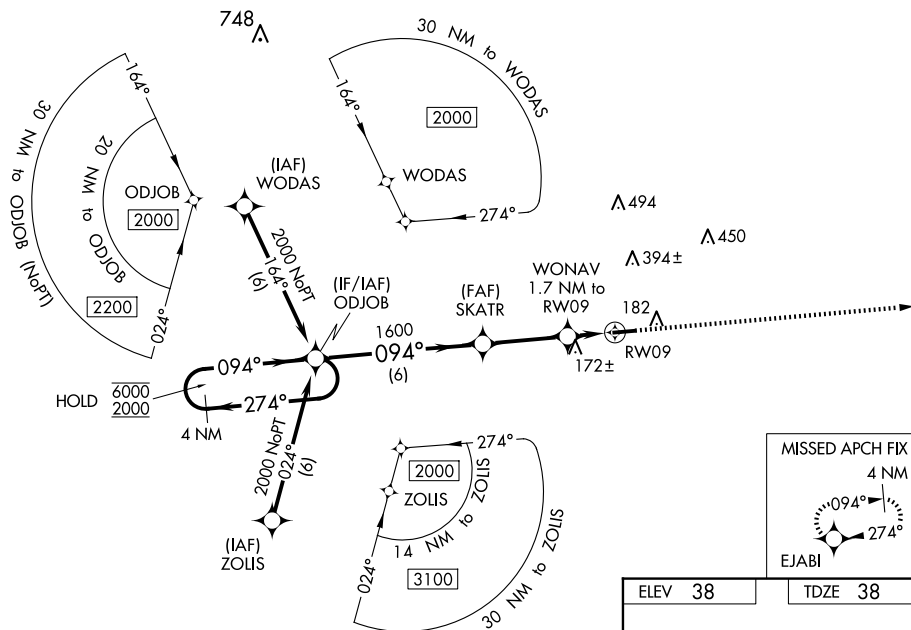
**T** Rwy 9 helicopter visibility reduction below 1 SM NA. Baro-VNAV NA.  
**A** NA When local altimeter not received, use Kenansville altimeter setting.  
 Straight-in and Circling Rwy 9 NA at night.

**MISSED APPROACH:** Climb to 2000 direct EJAB and hold.

AWOS-3P  
**121.07**

WILMINGTON APP CON★  
135.75 317.425

UNICOM  
122.8 (CTAF) **L**



MISSED APCH FIX

4 NM

094°

274°

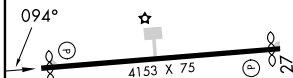
EJABI

ELEV 38

TDZE 38

Diagram illustrating a VGS and RNAV glidepath not coincident (VGS Angle 3.13/TCH 40).

The diagram shows a 4 NM Holding Pattern at 6000 and 2000 feet. The glidepath starts at ODJOB, passes through SKATR (1600 feet), and ends at WONAV (1.7 NM to RW09). The glidepath angle is 3.13 degrees (TCH 40). The diagram also shows the GP 3.00 degrees and TCH 51 degrees. The distance from ODJOB to SKATR is 6 NM, and from SKATR to WONAV is 3.1 NM. The distance from WONAV to RW09 is 1.7 NM. The diagram includes a legend for 2000 feet and EASL.



CATEGORY		A		B		C		D	
LPV	DA			401-1		363 (400-1)			
LNAV/ VNAV	DA			538-1½		500 (500-1½)			
LNAV	MDA	500-1		462 (500-1)		500-1¾		462 (500-1¾)	
<b>C</b> CIRCLING		620-1		582 (600-1)		820-2¼ 782 (800-2¼)		820-2½ 782 (800-2½)	

MIRL Rwy 9-27 **L**