

WAAS CH <b>56213</b> <b>W24A</b>	APP CRS <b>244°</b>	Rwy Idg <b>5130</b> TDZE <b>817</b> Apt Elev <b>823</b>
--	------------------------	---

## RNAV (GPS) RWY 24

MEXICO MEML (MYJ)

**▼** Helicopter visibility reduction below  $\frac{3}{4}$  SM NA. Inoperative table does not apply.  
**▲ NA** DME/DME RNP-0.3 NA. For uncompensated Baro-VNAV systems, INAV/VNAV NA below -16°C (4°F) or above 54°C (130°F). When local altimeter setting not received, use Columbia Rgnl altimeter setting; increase LPV DA to 1200 feet; increase INAV/VNAV DA to 1352 feet; increase all MDAs 80 feet and Circling visibility Cat C  $\frac{1}{2}$  SM. Baro-VNAV NA when using Columbia Rgnl altimeter setting.

MALS



**MISSED APPROACH:**  
Climb to 3000 direct  
TABCO and hold.

AWOS-3PT

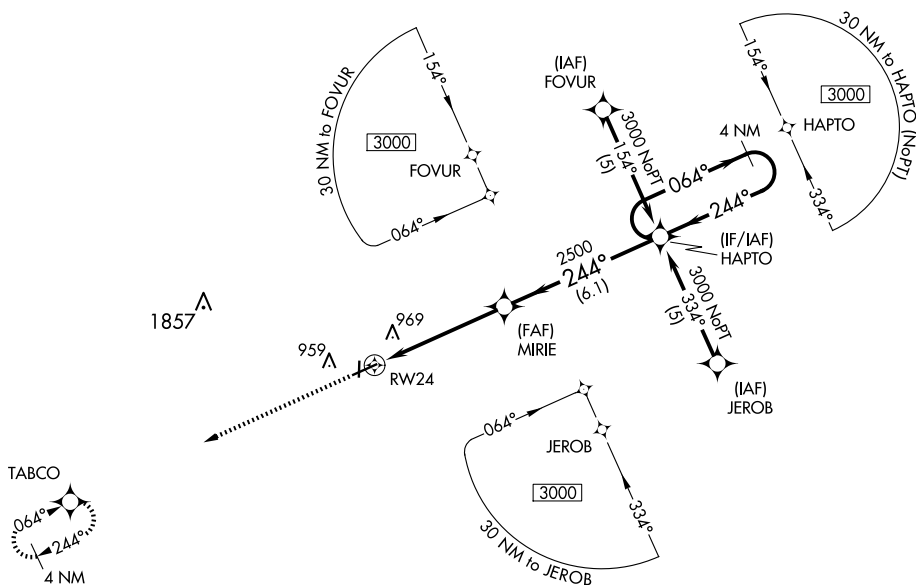
120.575

MIZZU APP CON

124.375

CTAF



122.9 L

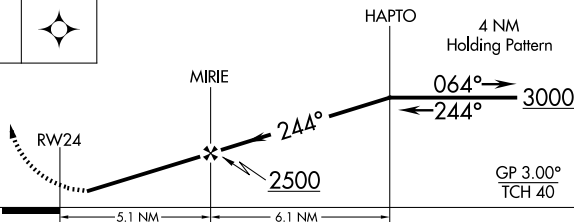


TABCO

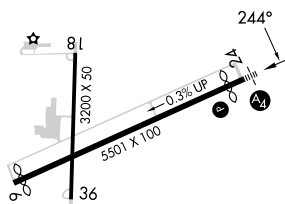


064° 244°  
4 NM

3000	TABCO
	



CATEGORY	A	B	C	D
LPV DA	1126-1	309 (400-1)		NA
LNAV/ VNAV DA	1278-1¾	461 (500-1¾)		NA
LNAV MDA	1220-1	403 (400-1)	1220-1¼ 403 (400-1¼)	NA
CIRCLING	1280-1	457 (500-1)	1420-1½ 597 (600-1½)	NA



REIL Rwy 18 **L**  
MIRL Rwy 6-24 and 18-36 **L**

RNAV (GPS) RWY 24