

WAAS
CH **56229**
W35A

APP CRS
354°

Rwy Idg **7003**
TDZE **1528**
Apt Elev **1533**

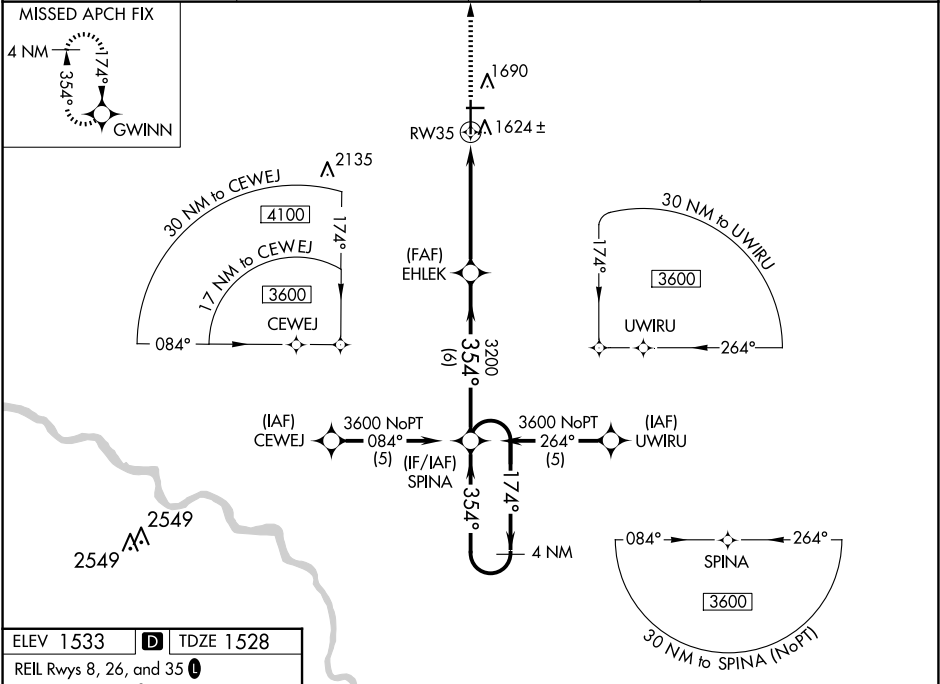
RNAV (GPS) RWY 35
NEWTON-CITY-COUNTY (E WK)

RNP APCH

When local altimeter setting not received, use Wichita Dwight D Eisenhower Ntl altimeter setting:
increase LPV DA to 1878 feet and visibility ¼ SM; increase all MDAs 100 feet and visibility LNAV Cat C ¾ SM and LNAV Cat D ½ SM. VDP NA when using Wichita Dwight D Eisenhower Ntl altimeter setting. Circling Rwy 8, 26 NA at night.

MISSED APPROACH:
Climb to 3200 direct GWINN and hold.

AWOS-3PT 123.875	WICHITA APP CON 125.5 306.2	CLNC DEL 126.55	UNICOM 123.0 (CTAF) 0
----------------------------	---------------------------------------	---------------------------	---------------------------------



ELEV **1533** **D** TDZE **1528**

REIL Rwy 8, 26, and 35 **0**
HIRL Rwy 17-35 **0**
MIRL Rwy 8-26

3200 GWINN

*LNAV only.

SPINA

4 NM Holding Pattern

GP 3.00°
TCH 53

CATEGORY	A	B	C	D
LPV DA	1778-¾ 250 (300-¾)			
LNAV/VNAV DA	NA			
LNAV MDA	1880-1 352 (400-1)			1880-1¼ 352 (400-1¼)
CIRCLING	2000-1 467 (500-1)		2000-1½ 467 (500-1½)	2100-2 567 (600-2)