

WAAS CH 50109 W17A	APP CRS 174°	Rwy Idg 6705 TDZE 1530 Apt Elev 1533
--	------------------------	---

RNAV (GPS) RWY 17

NEWTON-CITY-COUNTY (E WK)

RNP APCH.

▼

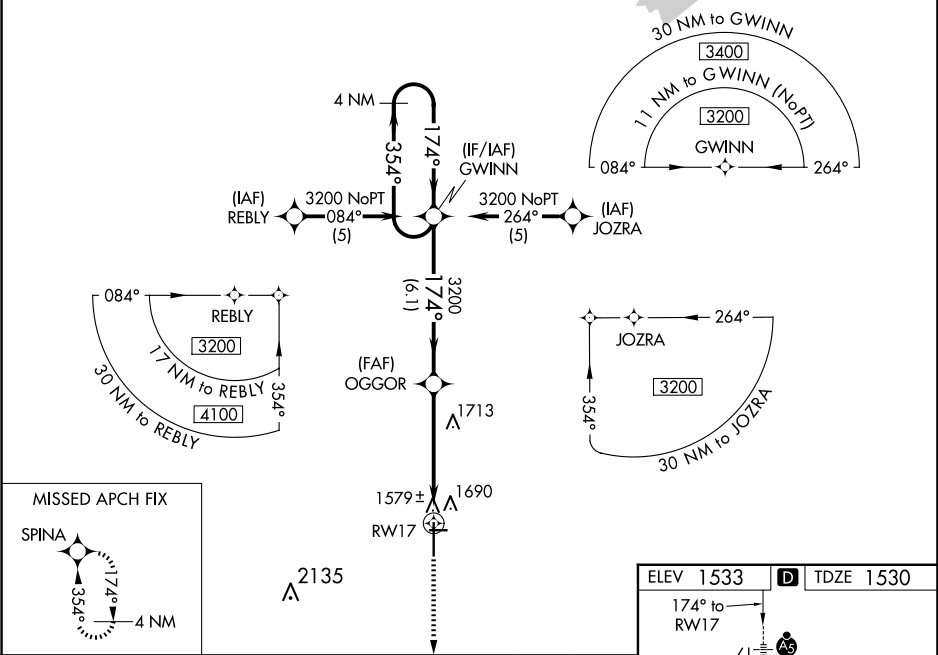
▲

When local altimeter setting not received, use Wichita Dwight D Eisenhower Ntl altimeter setting: increase LPV DA to 1891 feet and visibility ½ SM; increase all MDAs 100 feet and visibility Cat C and LNAV Cat D ¼ SM. VDP NA when using Wichita Dwight D Eisenhower Ntl altimeter setting. For inop ALS, increase LPV visibility to ¾ SM and LNAV Cat C/D to 1 ¾ SM. For inop ALS when using Wichita Dwight D Eisenhower Ntl altimeter setting, increase LPV visibility to 1 SM. Circling Rwy 8, 26 NA at night.

MALSR

MISSED APPROACH:
Climb to 3600 direct SPINA and hold.

AWOS-3PT 123.875	WICHITA APP CON 125.5 306.2	CLNC DEL 126.55	UNICOM 123.0 (CTAF) 0
----------------------------	---------------------------------------	---------------------------	--



4 NM Holding Pattern		GP 3.00° TCH 55	6.1 NM	3.6 NM	1.4 NM
CATEGORY	A	B	C	D	
LPV DA	1791-½ 261 (300-½)				
LNAV/VNAV DA	NA				
LNAV MDA	2020-½	490 (500-½)	2020-1	490 (500-1)	
CIRCLING	2020-1	487 (500-1)	2020-1½	2100-2	567 (600-2)

