

HAVRE, MONTANA

AL-5575 (FAA)

21280

VOR/DME HVR <u>114.65</u> Chan 93 (Y)	APP CRS 094°	Rwy Idg 5205 TDZE 2585 Apt Elev 2591
---	------------------------	---

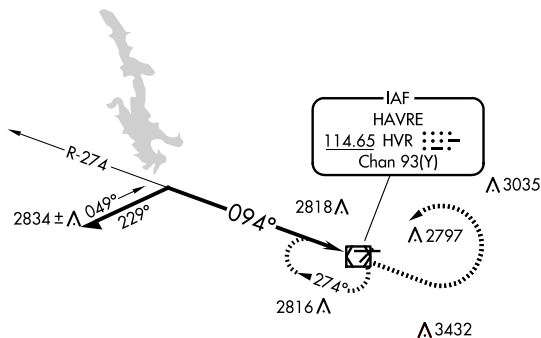
VOR RWY 8
HAVRE CITY-COUNTY(HVR)

TA

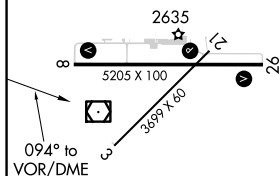
MISSED APPROACH: Climb to 3500 then climbing left turn to 8000 direct HVR VOR/DME and hold, continue climb-in-hold to 8000.

ASOS 135,225	SALT LAKE CENTER 133.4 285.4	UNICOM 122.8 (CTAF) 0
------------------------	--	---------------------------------

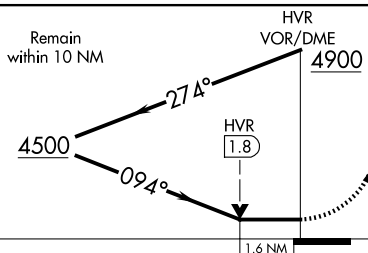
△ 3508






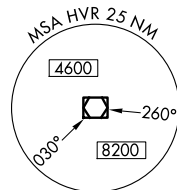
ELEV 2591	D	TDZE 2585
-----------	----------	-----------



REIL Rwy 8 and 26 **L**
MIRL Rwy 8-26
MIRL Rwy 3-21 **L**



3500	8000	HVR
		



		1.6 NM	
CATEGORY	A	B	D
S-8	3140-1	555 (600-1)	3140-1 ⁵ / ₈ 555 (600-1 ⁵ / ₈)
CIRCLING	3140-1	549 (600-1)	3360-2 ¹ / ₄ 769 (800-2 ¹ / ₄) 3740-3 1149 (1200-3)

HAVRE, MONTANA
Amdt 7B 07OCT21

HAVRE CITY-COUNTY (HVR)
VOR RWY 8

48°33'N-109°46'W

NW-1, 07 AUG 2025 to 04 SEP 2025

NW-1, 07 AUG 2025 to 04 SEP 2025