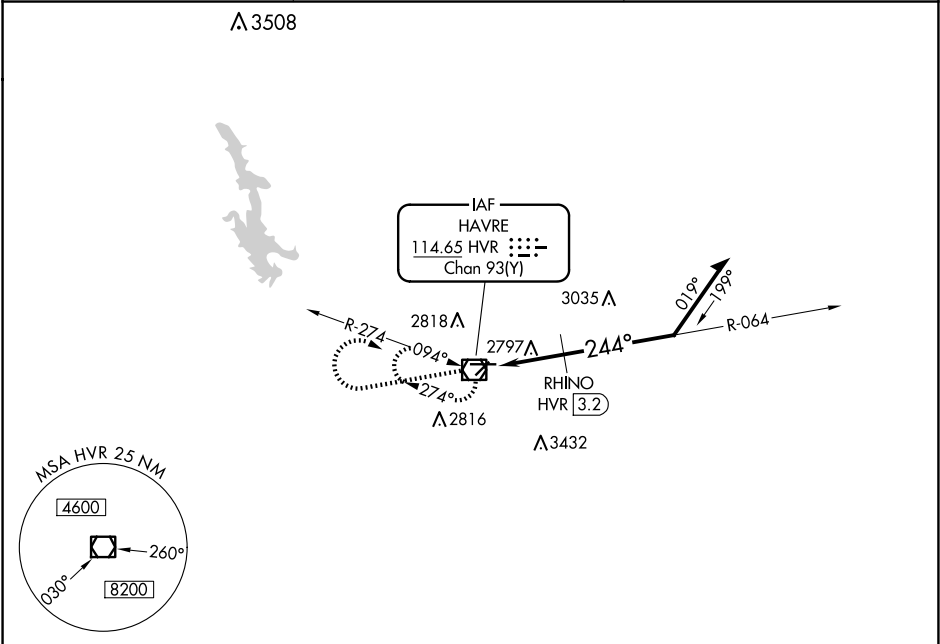


VOR/DME HVR	APP CRS	Rwy Idg	5205
114.65	244°	TDZE	2586
Chan 93(Y)		Apt Elev	2591

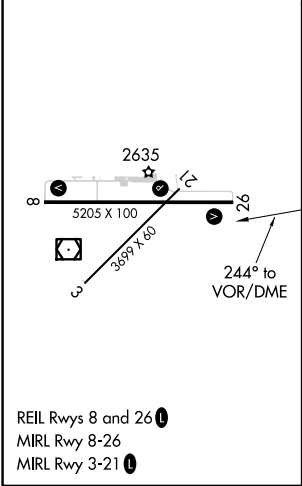
VOR RWY 26
HAVRE CITY-COUNTY (HVR)

<div><div></div><div></div></div>	MISSED APPROACH: Climb to 4500 then climbing right turn to 8000 direct HVR VOR/DME and hold, continue climb-in-hold to 8000.
-----------------------------------	--

ASOS 135.225	SALT LAKE CENTER 133.4 285.4	UNICOM 122.8 (CTAF) 0
-----------------	---------------------------------	--------------------------



ELEV 2591	D	TDZE 2586
-----------	---	-----------



4500

8000

HVR

↑

↗

VGSI and descent angles not coincident (VGSI Angle 3.00/TCH 37).

HVR

VOR/DME

10000

064°

4500

≤ 3.34°

TCH 38

3480

3.2 NM

244°

4500

Remain within 10 NM

CATEGORY	A	B	C	D
S-26	3480-1¼	894 (900-1¼)	3480-2¾ 894 (900-2¾)	3480-3 894 (900-3)
CIRCLING	3480-1¼	889 (900-1¼)	3480-2¾ 889 (900-2¾)	3740-3 1149 (1200-3)
RHINO FIX MINIMUMS				
S-26	3060-1	474 (500-1)	3060-1¼ 474 (500-1¼)	3060-1½ 474 (500-1½)
CIRCLING	3080-1 489 (500-1)	3120-1 529 (600-1)	3360-2¼ 769 (800-2¼)	3740-3 1149 (1200-3)