

WAAS CH 99316 W08A	APP CRS 077°	Rwy Idg TDZE 2585 Apt Elev 2591
--	------------------------	---

RNAV (GPS) RWY 8

HAVRE CITY-COUNTY (HVR)

RNP APCH-GPS.

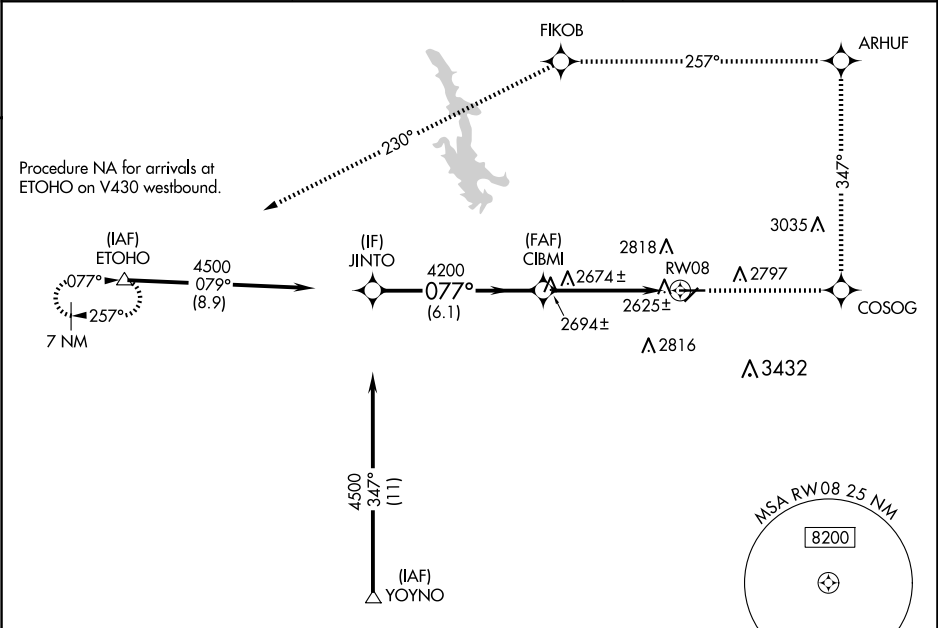
▼

▲

For uncompensated Baro-VNAV systems,
LNAV/VNAV NA below -20°C or above 54°C.

MISSED APPROACH: Climb to 8000 direct COSOG
and left on track 347° to ARHUF and left turn on track
257° to FIKOB and on track 230° to ETOHO and hold.

ASOS 135.225	SALT LAKE CENTER 133.4 285.4	UNICOM 122.8 (CTAF) 0
------------------------	--	---------------------------------



ELEV 2591	D	TDZE 2585
------------------	----------	------------------

Procedure NA for arrivals at YOYNO
on V257-611 southwest bound.

Procedure Turn NA

JINTO

4500

077°

CIBMI

4200

RW08

GP 3.00°

TCH 40

6.1 NM

3.6 NM

1.3 NM

*1.3 NM to RW08

*LNAV only.

8000

COSOG

ARHUF

FIKOB

ETOHO

tr 347°

tr 257°

tr 230°

△

5205 X 100

3699 X 60

2635

077° to RW08

REIL Rwy 8 and 26

MIRL Rwy 8-26

MIRL Rwy 3-21

CATEGORY	A	B	C	D
LPV DA	2835-1 250 (300-1)			
LNAV/VNAV DA	2906-1¼ 321 (400-1¼)			
LNAV MDA	3020-1 435 (500-1)	3020-1¼ 435 (500-1¼)	3020-1½ 435 (500-1½)	3020-1½ 435 (500-1½)
CIRCLING	3080-1 489 (500-1)	3120-1 529 (600-1)	3360-2¼ 769 (800-2¼)	3740-3 1149 (1200-3)